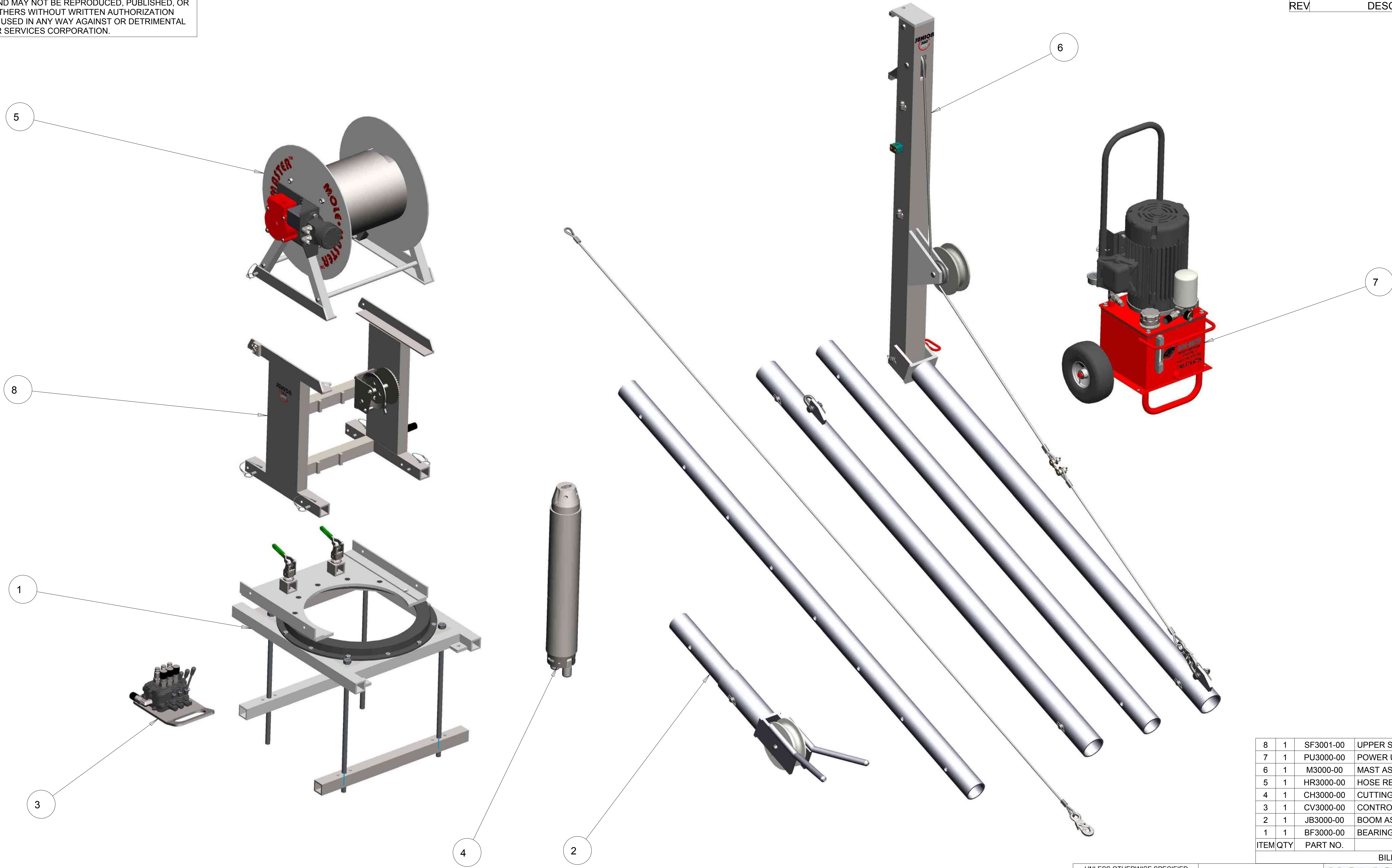


THIS MATERIAL IS THE PROPERTY OF MOLE MASTER SERVICES CORPORATION AND MAY NOT BE REPRODUCED, PUBLISHED, OR DISCLOSED TO OTHERS WITHOUT WRITTEN AUTHORIZATION AND MAY NOT BE USED IN ANY WAY AGAINST OR DETRIMENTAL TO MOLE MASTER SERVICES CORPORATION.

REVISION HISTORY			
REV	DESCRIPTION	DATE	BY

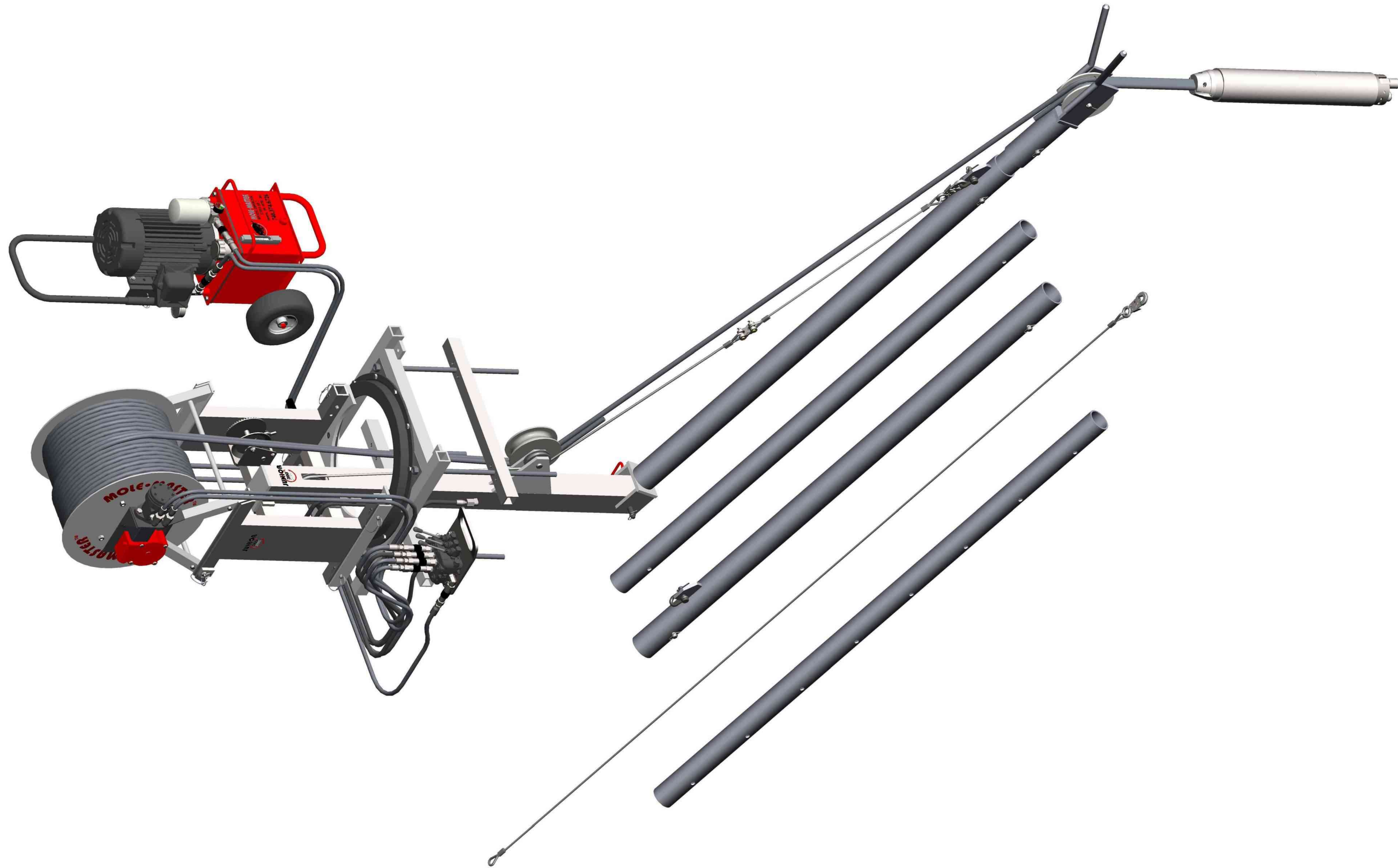



ITEM	QTY	PART NO.	DESCRIPTION
8	1	SF3001-00	UPPER SUPPORT FRAME
7	1	PU3000-00	POWER UNIT ASSEMBLY
6	1	M3000-00	MAST ASSEMBLY
5	1	HR3000-00	HOSE REEL ASSEMBLY
4	1	CH3000-00	CUTTING HEAD ASSEMBLY
3	1	CV3000-00	CONTROL VALVE ASSEMBLY
2	1	JB3000-00	BOOM ASSEMBLY
1	1	BF3000-00	BEARING FRAME ASSEMBLY

UNLESS OTHERWISE SPECIFIED DIMENSIONS ARE IN INCHES.		APPROVALS		DATE	 27815 STATE ROUTE 7 MARIETTA, OHIO 45750 USA 740-374-6726
TOLERANCES ARE: DECIMALS .01 ± 2" .XX ± .01 .XXX ± .005 FRACTIONAL ± 1/16		DRAWN	EPP	12-14-12	
DO NOT SCALE DRAWING		CHECKED	-	-	
TREATMENT		ENGR	-	-	
FINISH	-	TITLE		HYDRAULIC JUNIOR 360	
MATERIAL	SEE BOM	DWG NO.		PL3360H-1	
SCALE 1/8		SHEET		1 OF 2	

THIS MATERIAL IS THE PROPERTY OF MOLE MASTER SERVICES CORPORATION AND MAY NOT BE REPRODUCED, PUBLISHED, OR DISCLOSED TO OTHERS WITHOUT WRITTEN AUTHORIZATION AND MAY NOT BE USED IN ANY WAY AGAINST OR DETRIMENTAL TO MOLE MASTER SERVICES CORPORATION.

REVISION HISTORY			
REV	DESCRIPTION	DATE	BY

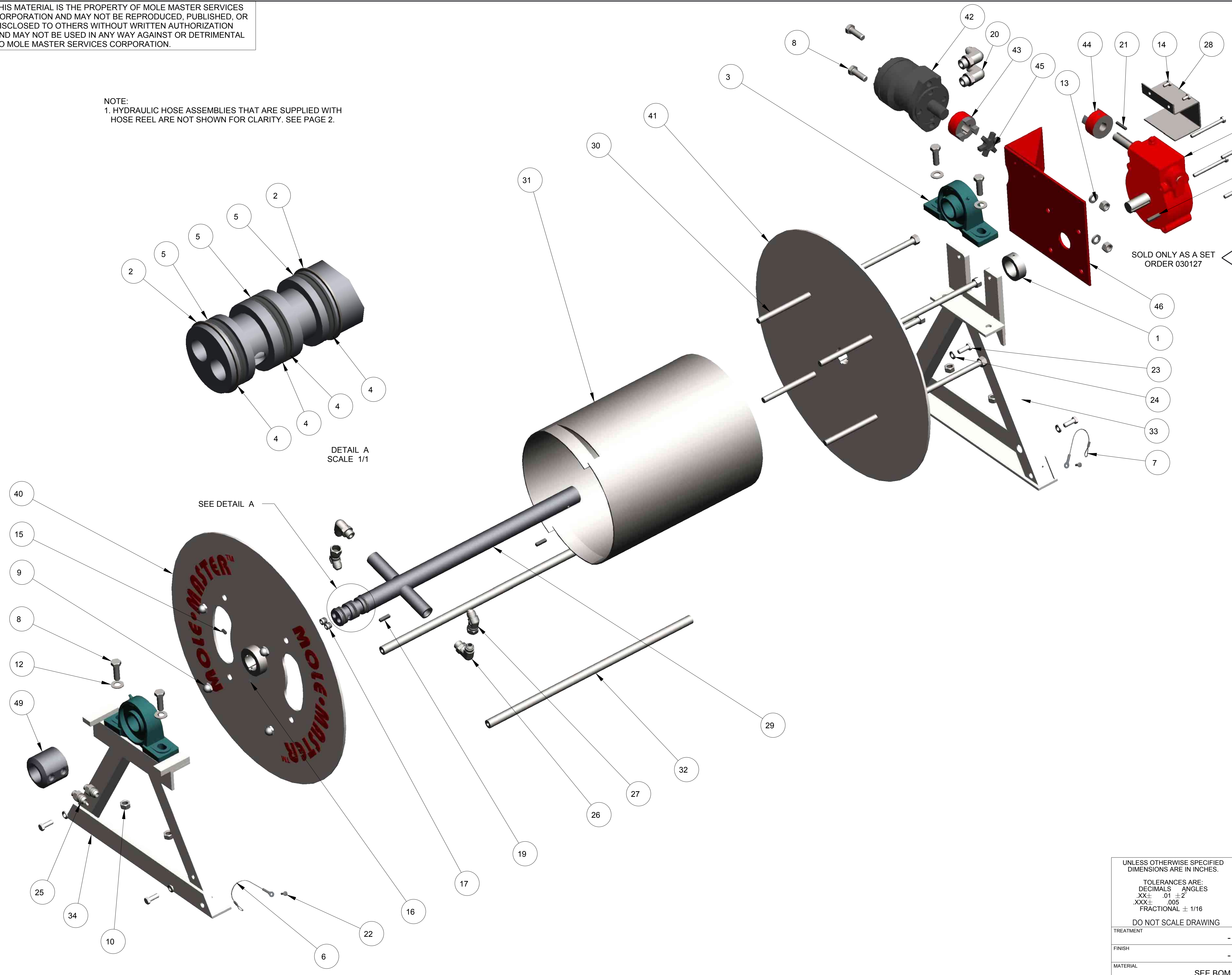


UNLESS OTHERWISE SPECIFIED DIMENSIONS ARE IN INCHES.		APPROVALS		DATE		27815 STATE ROUTE 7 MARIETTA, OHIO 45750 USA 740-374-6728	
TOLERANCES ARE: DECIMALS ANGLES .XX± .01 ±2° .XXX± .005 FRACTIONAL ± 1/16		DRAWN	EPP	12-14-12		TITLE	HYDRAULIC JUNIOR 360
DO NOT SCALE DRAWING		CHECKED	-	-	MODEL NO: JR360H		
TREATMENT	-	ENGR	-	-	MASTER PARTS LIST		
FINISH	-				SIZE	D	
MATERIAL	-				DWG NO.	PL3360H-1	
		SCALE	1/8	CALC WT	ACT WT	SHEET	2 OF 2

THIS MATERIAL IS THE PROPERTY OF MOLE MASTER SERVICES CORPORATION AND MAY NOT BE REPRODUCED, PUBLISHED, OR DISCLOSED TO OTHERS WITHOUT WRITTEN AUTHORIZATION AND MAY NOT BE USED IN ANY WAY AGAINST OR DETRIMENTAL TO MOLE MASTER SERVICES CORPORATION.

REVISION HISTORY			
REV	DESCRIPTION	DATE	BY
A	ADDED 030141	03-07-16	EPP

NOTE:
1. HYDRAULIC HOSE ASSEMBLIES THAT ARE SUPPLIED WITH HOSE REEL ARE NOT SHOWN FOR CLARITY. SEE PAGE 2.



ITEM	QTY	PART NO.	DESCRIPTION
50	1	HR3009-01	TERNER GEAR REDUCER
49	1	HR3000-031	SWIVEL FITTING
48	3	030125	QUICK COUPLING, MALE END, 1/2" FEMALE PIPE
47	3	030126	QUICK COUPLING, FEMALE END, 1/2" FEMALE PIPE
46	1	HR2003-00	MOTOR MOUNTING BRACKET WELDMENT
45	1	030116	LOVEJOY-SPIDER COUPLING-L090/L095SOX
44	1	030117	LOVEJOY COUPLER-L095X3/4HUB3/16
43	1	030118	LOVEJOY COUPLER-L095X1HUB1/4
42	1	030137	HYDRAULIC MOTOR
41	1	HR3006-00	HOSE REEL END
40	1	HR3005-00	HOSE REEL END
39	1	HH3003-00_2	HOSE ASSY, #8M3K, (1) 8GE-8FJX, (1) 8GE-8MP, 144" LGTH
38	1	HH3003-00_0	HOSE ASSY, #8M3K, (1) 8GE-8FJX, (1) 8GE-8MP, 144" LGTH
37	1	HH1920-00	HOSE ASSY, #8M3K, (2) 165'-0" LGTH, (1) HG-28, SLEEVE
36	1	HH3001-00_4	HOSE ASSY, #6M3K, (1) 6G-8FJX, (1) 6G-8MP, 140" LGTH
35	1	HH3001-00_0	HOSE ASSY, #6M3K, (1) 6G-8FJX, (1) 6G-8MP, 140" LGTH
34	1	HR3002-00	FRAME, SWIVEL SIDE
33	1	HR3001-00	FRAME, DRIVE SIDE
32	2	HR3003-01	FRAME CONNECTING ROD
31	1	HR3004-01	DRUM, HOSE REEL
30	4	HR3008-00	DRUM TIE ROD
29	1	HR3007-00	DRIVE SHAFT WELDMENT
28	1	HR2000-02	COUPLING GUARD
27	2	020113	8MJ-8FJX45, MALE JIC-FEMALE JIC SWIVEL 45° EL HYD ADPT
26	2	020114	8MB-8MJ90, MALE O RING BOSS-MALE JIC 90° EL HYD ADPT
25	2	020108	6MB-8MJ, MALE O RING BOSS-MALE JIC HYD ADAPTER
24	4	010137	3/8", SPLIT LOCK WASHER, ZP
23	4	010117	3/8-16 X 1", HHCS, GR. 5, ZP
22	2	010113	3/16", BLIND POP-RIVET, BUTTON HEAD, ALUM
21	1	010108	3/16" SQUARE X 1-1/4" L, MACHINE KEY, STL
20	2	020115	10MB-8MJ90, MALE O RING BOSS-MALE JIC 90° EL HYD ADPT
19	2	010109	1/4" SQUARE X 1" L, MACHINE KEY, STL
18	1	010110	1/4" SQUARE X 1-1/4" L, MACHINE KEY, STL
17	2	010156	1/4" MALE NPT, SCKT PIPE PLUG, 3/4 TAPER, STL
16	2	010126	1/4-20 X 1/4", SCKT. SET SCR, CUP PT, BLK. OXIDE
15	2	010127	1/4-20 X 1/2", SCKT. SET SCR, CUP PT, BLK. OXIDE
14	2	010114	1/4-20 X 1/2", HHCS, GR. 5, ZP
13	2	010138	1/2", SPLIT LOCK WASHER, ZP
12	4	010132	1/2", FLAT WASHER, SAE, ZP
11	2	010158	1/2" X 2-1/2", DETENT RING PIN
10	6	010140	1/2-13, HEX NUT, GR. A, ZP
9	4	010143	1/2-13, ACORN NUT, NICKEL PLT
8	6	010120	1/2-13 X 1-1/2", HHCS, GR. 5, ZP
7	1	010111_1	1/16" X 6", BARE CABLE, STEEL LANYARD
6	1	010111	1/16" X 6", BARE CABLE, STEEL LANYARD
5	3	020200	1-1/4 ID x 1-1/2 OD x 1/8 O-RING
4	4	020201	1-1/4 ID x 1-1/2 OD x .050 FLAT GASKET
3	2	030123	1-1/2", PILLLOW BLOCK BEARING
2	2	010107	1-1/2" ID, EXTERNAL SPIRAL RING, MED DUTY, STL
1	1	010134	1-1/2" ID X 3/4" W, CLAMPING COLLAR, ZP

UNLESS OTHERWISE SPECIFIED DIMENSIONS ARE IN INCHES.

TOLERANCES ARE:
 DECIMALS .01 ± .002
 ANGLES .XX ± .005
 FRACTIONAL ± 1/16

DO NOT SCALE DRAWING

TREATMENT -

FINISH -

MATERIAL SEE BOM

APPROVALS: EPP, DATE: 12-14-12

SCALE: 1/4

27815 STATE ROUTE 7
 MARIETTA, OHIO
 45750 USA
 740-374-6726

MOLE-MASTER SERVICES CORPORATION

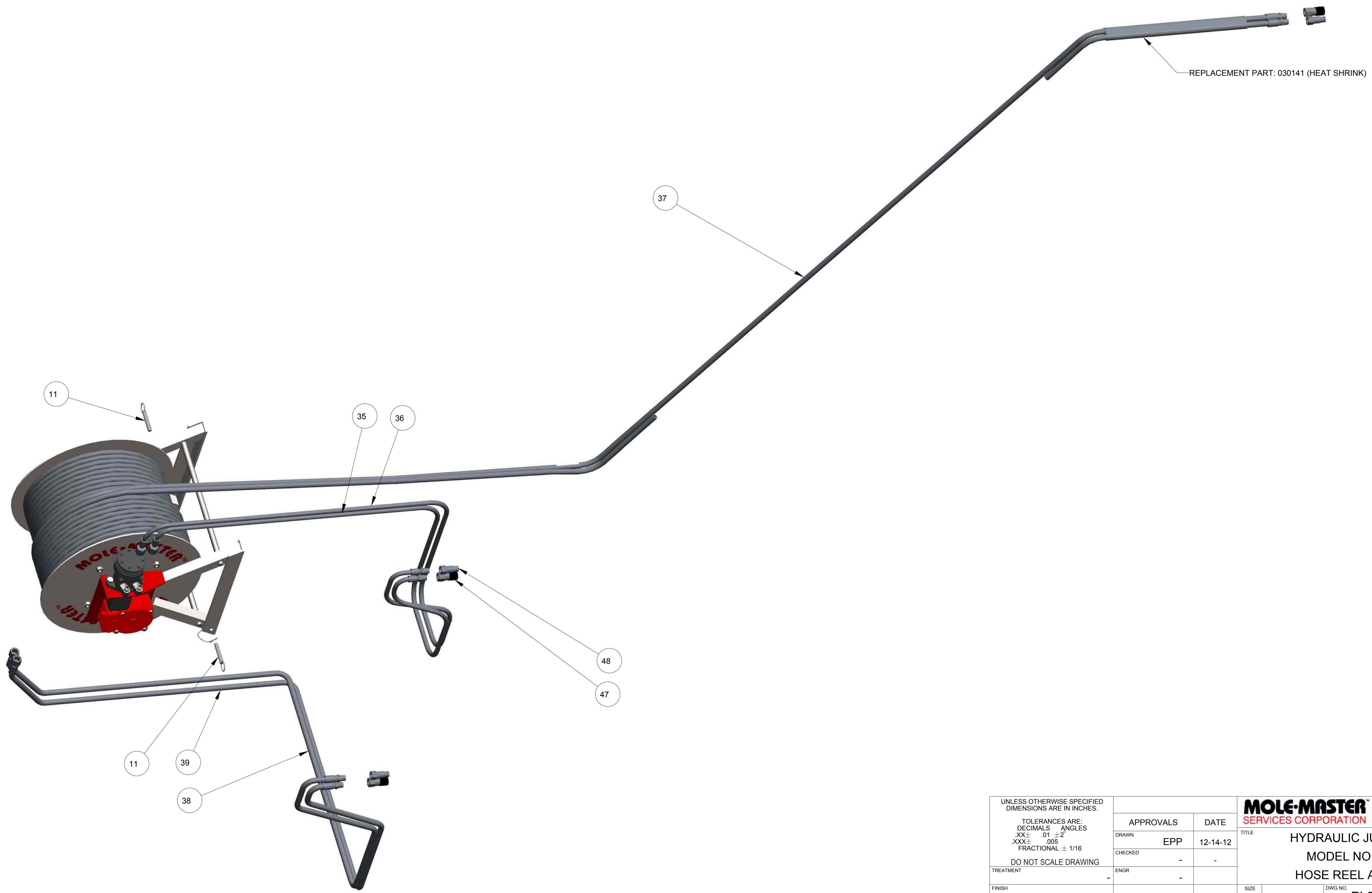
TITLE: HYDRAULIC JUNIOR 360°
 MODEL NO: JR360H
 HOSE REEL ASSEMBLY

SIZE: D, DWG NO: PL3360H-2, REV: A


SHEET: 1 OF 2

THIS MATERIAL IS THE PROPERTY OF MOLE MASTER SERVICES CORPORATION AND MAY NOT BE REPRODUCED, PUBLISHED, OR DISCLOSED TO OTHERS WITHOUT WRITTEN AUTHORIZATION AND MAY NOT BE USED IN ANY WAY AGAINST OR DETRIMENTAL TO MOLE MASTER SERVICES CORPORATION.

REVISION HISTORY			
REV	DESCRIPTION	DATE	BY
A	ADDED 030141	03-07-16	EPP

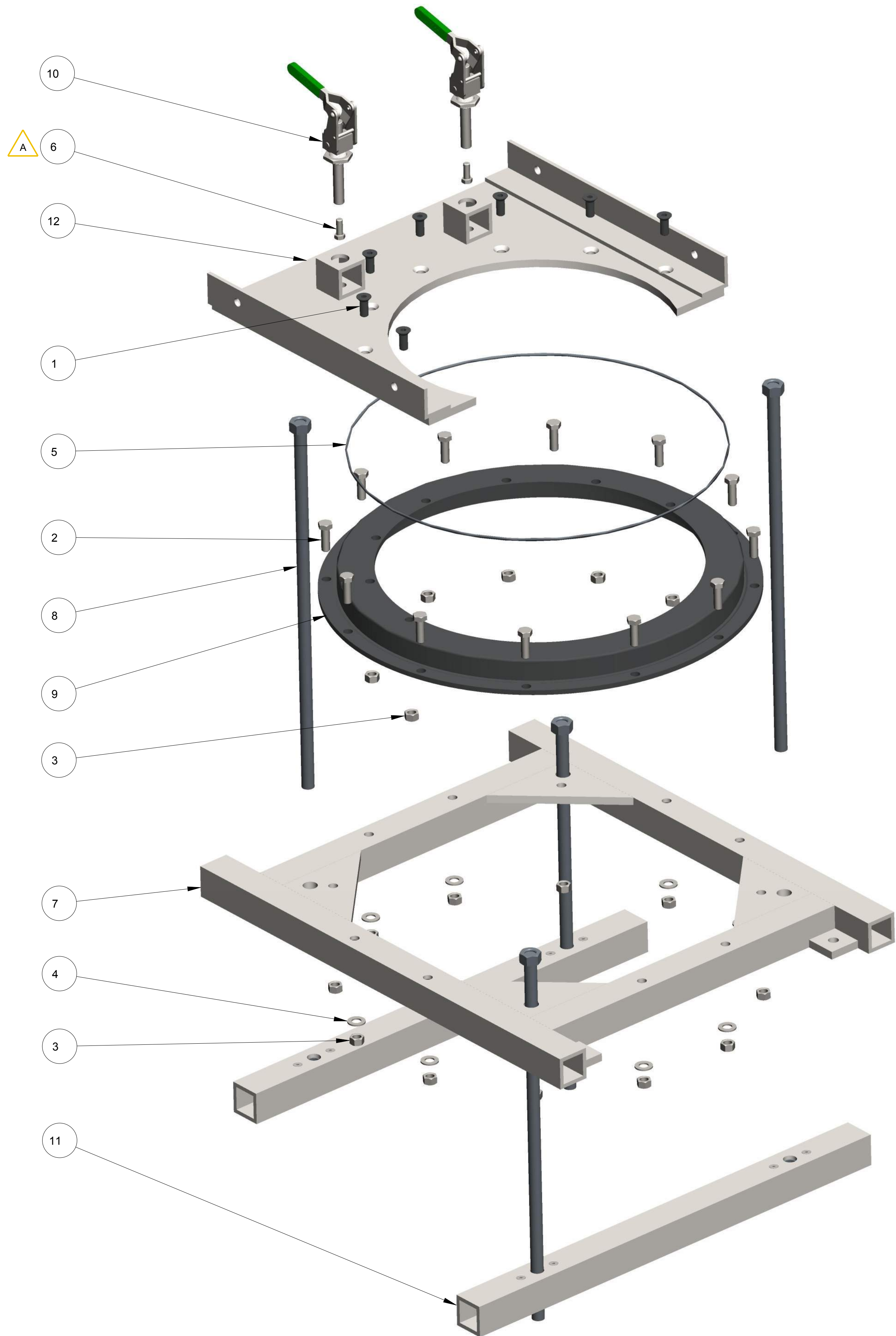


REPLACEMENT PART: 030141 (HEAT SHRINK)


UNLESS OTHERWISE SPECIFIED DIMENSIONS ARE IN INCHES.		APPROVALS		DATE			27815 STATE ROUTE 7 MARIETTA, OHIO 45750 USA 740-374-6726	
TOLERANCES ARE: DECIMALS .01 ± 2" .XX ± .01 .XXX ± .005 FRACTIONAL ± 1/16		EPP		12-14-12	TITLE		HYDRAULIC JUNIOR 360	
DO NOT SCALE DRAWING		-		-	MODEL NO:		JR360H	
TREATMENT	-	ENGR	-	-	HOSE REEL ASSEMBLY			
FINISH	-				SIZE	DWG NO.	REV.	
MATERIAL					D	PL3360H-2	A	
		SCALE	3/20	CALC WT	ACT WT	SHEET	2 OF 2	

THIS MATERIAL IS THE PROPERTY OF MOLE MASTER SERVICES CORPORATION AND MAY NOT BE REPRODUCED, PUBLISHED, OR DISCLOSED TO OTHERS WITHOUT WRITTEN AUTHORIZATION AND MAY NOT BE USED IN ANY WAY AGAINST OR DETRIMENTAL TO MOLE MASTER SERVICES CORPORATION.

REVISION HISTORY			
REV	DESCRIPTION	DATE	BY
A	ADDED (2) 010117 TO BOM	03-12-14	EPP

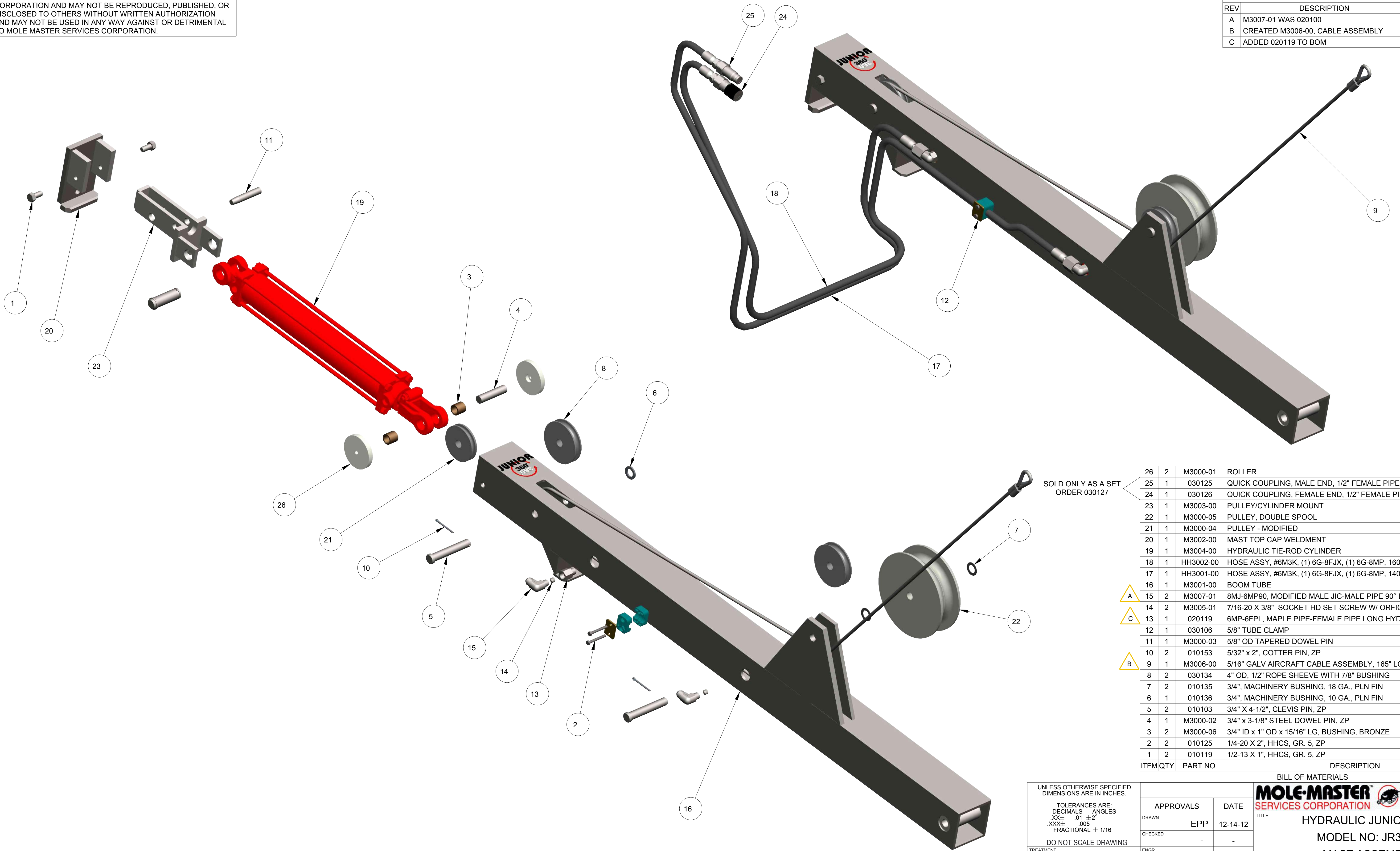


ITEM	QTY	PART NO.	DESCRIPTION
12	1	BF3001-00	UPPER SUPPORT
11	2	BF2003-00	UNDER ROOF LOCKING BAR ASSY
10	2	030107	PLUNGER TOGGLE CLAMP
9	1	4001	MAIN ROTATION BEARING
8	4	BF2004-00	LOCKING BAR ATTACHMENT BOLT
7	1	BF2002-00	BEARING SUPPORT
6	2	010117	3/8-16 X 1", HHCS, GR. 5, ZP
5	1	020205	22" ID X .210" CS BUNA O-RING, VULCANIZE
4	8	010132	1/2", FLAT WASHER, SAE, ZP
3	19	010140	1/2-13, HEX NUT, GR. A, ZP
2	12	010120	1/2-13 X 1-1/2", HHCS, GR. 5, ZP
1	7	010124	1/2-13 X 1-1/2", FHSCS, BLK. OXIDE

UNLESS OTHERWISE SPECIFIED DIMENSIONS ARE IN INCHES.		APPROVALS		DATE			27815 STATE ROUTE 7 MARIETTA, OHIO 45750 USA 740-374-6726	
TOLERANCES ARE: DECIMALS .XX ± .01 ± .02 .XXX ± .005 FRACTIONAL ± 1/16		DRAWN		EPP	12-14-12		TITLE	
DO NOT SCALE DRAWING		CHECKED		-	-		HYDRAULIC JUNIOR 360 MODEL NO: JR360H BEARING FRAME ASSEMBLY	
TREATMENT		ENGR		-	-		REV.	
FINISH		SCALE		1/4	D		PL3360H-3	
MATERIAL		SEE BOM		SCALE		1/4	SHEET 1 OF 1	

THIS MATERIAL IS THE PROPERTY OF MOLE MASTER SERVICES CORPORATION AND MAY NOT BE REPRODUCED, PUBLISHED, OR DISCLOSED TO OTHERS WITHOUT WRITTEN AUTHORIZATION AND MAY NOT BE USED IN ANY WAY AGAINST OR DETRIMENTAL TO MOLE MASTER SERVICES CORPORATION.

REVISION HISTORY			
REV	DESCRIPTION	DATE	BY
A	M3007-01 WAS 020100	03-05-14	EPP
B	CREATED M3006-00, CABLE ASSEMBLY	11-30-15	EPP
C	ADDED 020119 TO BOM	12-09-16	EPP



SOLD ONLY AS A SET
ORDER 030127

ITEM	QTY	PART NO.	DESCRIPTION
26	2	M3000-01	ROLLER
25	1	030125	QUICK COUPLING, MALE END, 1/2" FEMALE PIPE
24	1	030126	QUICK COUPLING, FEMALE END, 1/2" FEMALE PIPE
23	1	M3003-00	PULLEY/CYLINDER MOUNT
22	1	M3000-05	PULLEY, DOUBLE SPOOL
21	1	M3000-04	PULLEY - MODIFIED
20	1	M3002-00	MAST TOP CAP WELDMENT
19	1	M3004-00	HYDRAULIC TIE-ROD CYLINDER
18	1	HH3002-00	HOSE ASSY, #6M3K, (1) 6G-8FJX, (1) 6G-8MP, 160" CUT LGTH
17	1	HH3001-00	HOSE ASSY, #6M3K, (1) 6G-8FJX, (1) 6G-8MP, 140" LGTH
16	1	M3001-00	BOOM TUBE
A	15	2	M3007-01 8MJ-6MP90, MODIFIED MALE JIC-MALE PIPE 90° ELBOW
14	2	M3005-01	7/16-20 X 3/8" SOCKET HD SET SCREW W/ ORFICE
C	13	1	020119 6MP-6FPL, MAPLE PIPE-FEMALE PIPE LONG HYD ADAPTER
12	1	030106	5/8" TUBE CLAMP
11	1	M3000-03	5/8" OD TAPERED DOWEL PIN
10	2	010153	5/32" x 2", COTTER PIN, ZP
B	9	1	M3006-00 5/16" GALV AIRCRAFT CABLE ASSEMBLY, 165" LG
8	2	030134	4" OD, 1/2" ROPE SHEEVE WITH 7/8" BUSHING
7	2	010135	3/4", MACHINERY BUSHING, 18 GA., PLN FIN
6	1	010136	3/4", MACHINERY BUSHING, 10 GA., PLN FIN
5	2	010103	3/4" X 4-1/2", CLEVIS PIN, ZP
4	1	M3000-02	3/4" x 3-1/8" STEEL DOWEL PIN, ZP
3	2	M3000-06	3/4" ID x 1" OD x 15/16" LG, BUSHING, BRONZE
2	2	010125	1/4-20 X 2", HHCS, GR. 5, ZP
1	2	010119	1/2-13 X 1", HHCS, GR. 5, ZP

UNLESS OTHERWISE SPECIFIED
DIMENSIONS ARE IN INCHES.

TOLERANCES ARE:
DECIMALS .01 ± 2"
.XX± .01 ± 2"
.XXX± .005
FRACTIONAL ± 1/16

DO NOT SCALE DRAWING

TREATMENT -

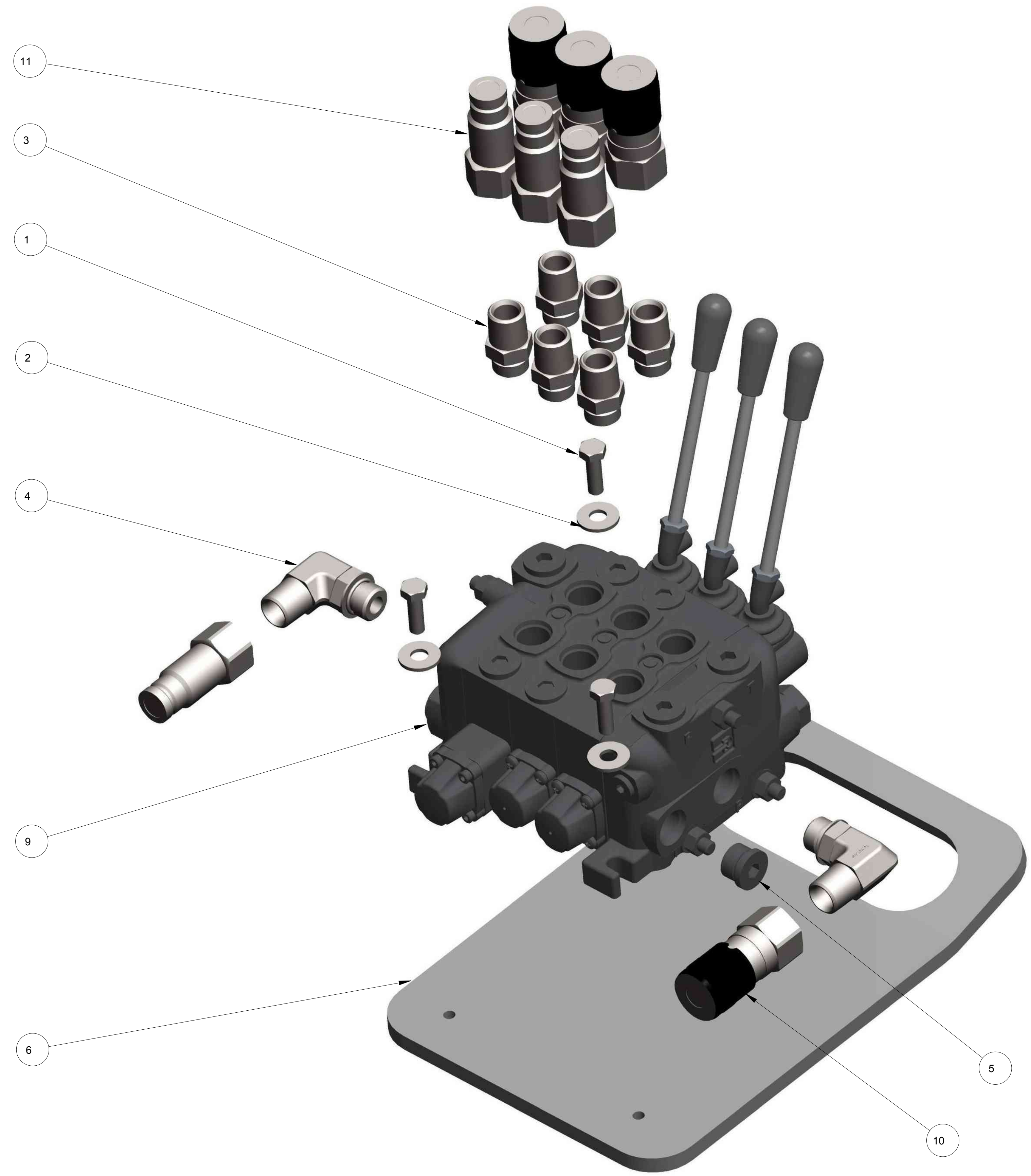
FINISH -

MATERIAL - SEE BOM

APPROVALS		DATE	27815 STATE ROUTE 7 MARIETTA, OHIO 45750 USA 740-374-6726	
DRAWN	EPP	12-14-12		
CHECKED	-	-		
ENGR	-	-		
TITLE			HYDRAULIC JUNIOR 360 MODEL NO: JR360H MAST ASSEMBLY	
SIZE	D	DWG NO.	PL3360H-4	
SCALE	1/4"	SHEET	1 OF 1	

THIS MATERIAL IS THE PROPERTY OF MOLE MASTER SERVICES CORPORATION AND MAY NOT BE REPRODUCED, PUBLISHED, OR DISCLOSED TO OTHERS WITHOUT WRITTEN AUTHORIZATION AND MAY NOT BE USED IN ANY WAY AGAINST OR DETRIMENTAL TO MOLE MASTER SERVICES CORPORATION.


REVISION HISTORY			
REV	DESCRIPTION	DATE	BY



NOTE:
 1. HYDRAULIC HOSE ASSEMBLIES ARE NOT SHOWN FOR CLARITY.
 2. QUICK COUPLINGS THAT CONNECT TO HYDRAULIC HOSES ARE NOT SHOWN FOR CLARITY

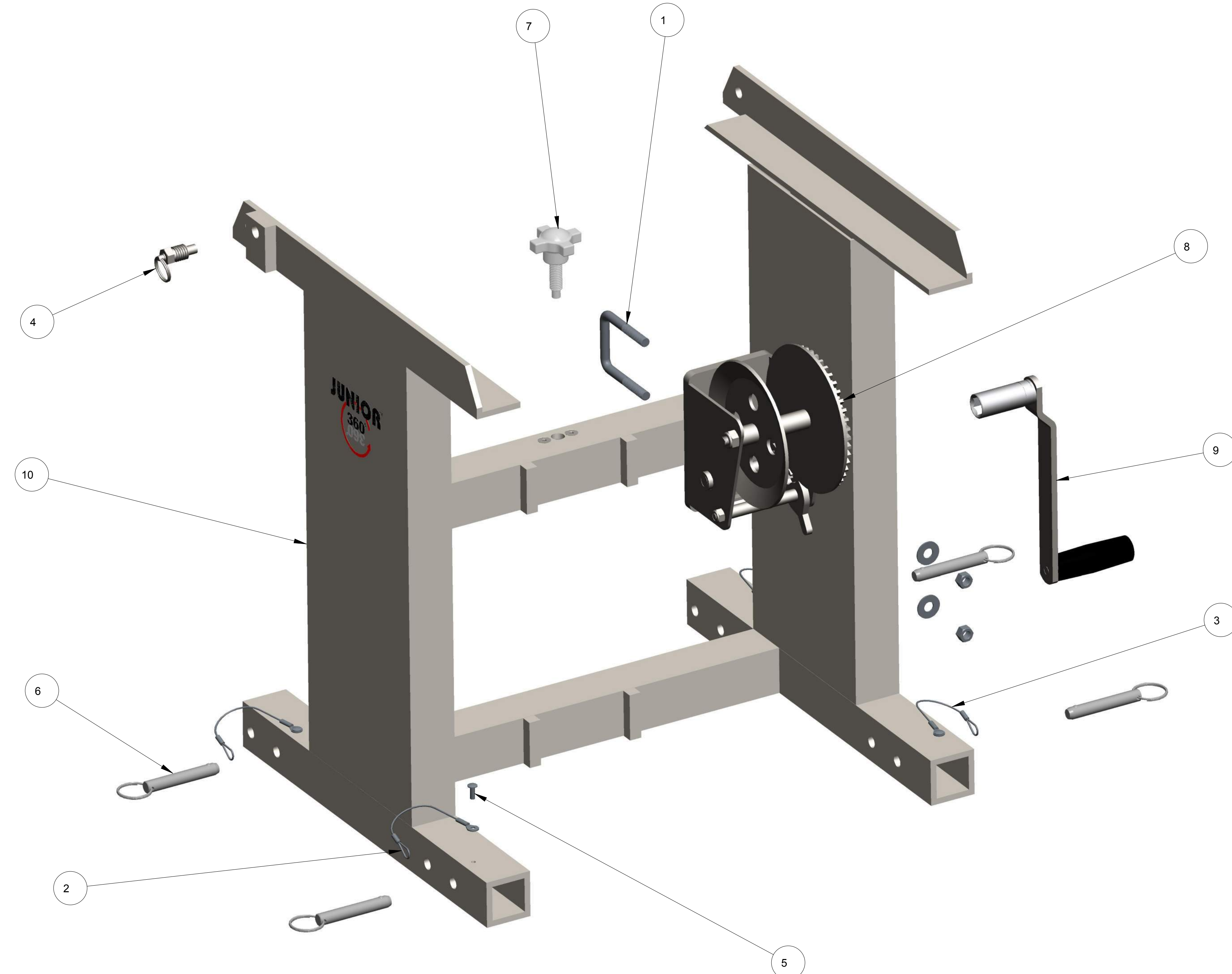
SOLD ONLY AS A SET
 ORDER 030127

ITEM	QTY	PART NO.	DESCRIPTION
11	6	030125	QUICK COUPLING, MALE END, 1/2" FEMALE PIPE
10	6	030126	QUICK COUPLING, FEMALE END, 1/2" FEMALE PIPE
9	1	030131	HYDRAULIC CONTROL VALVE
8	1	HH0120-1_5	HOSE ASSY,#8M3K,(2) 8GE-8MP, 120" LGTH
7	1	HH0120-1_4	HOSE ASSY,#8M3K,(2) 8GE-8MP, 120" LGTH
6	1	CV3000-01	CONTROL VALVE MOUNTING PLATE
5	1	020112	8MB-SH-PLUG, MALE O RING BOSS PLUG HYD ADAPTER
4	2	020117	8MB-8MP90, MALE O RING BOSS-MALE PIPE 90° ELBOW HYD ADPT
3	6	020109	8MB-8MP, MALE O RING BOSS-MALE PIPE THREAD HYD ADAPTER
2	3	010130	5/16", FLAT WASHER, SAE, ZP
1	3	010115	5/16-18 X 1", HHCS, GR. 5, ZP

UNLESS OTHERWISE SPECIFIED DIMENSIONS ARE IN INCHES.		APPROVALS		DATE			27815 STATE ROUTE 7 MARIETTA, OHIO 45750 USA 740-374-6726	
TOLERANCES ARE: DECIMALS .01 ± 2" .XX± .005 FRACTIONAL ± 1/16		DRAWN		EPP	12-14-12		TITLE	
DO NOT SCALE DRAWING		CHECKED		-	-		HYDRAULIC JUNIOR 360 MODEL NO: JR360H CONTROL VALVE ASSEMBLY	
TREATMENT		ENGR		-	-		SIZE	
FINISH		MATERIAL		SEE BOM		DWG NO.		REV.
						D		-
						SCALE		1 OF 1
						3/4		

THIS MATERIAL IS THE PROPERTY OF MOLE MASTER SERVICES CORPORATION AND MAY NOT BE REPRODUCED, PUBLISHED, OR DISCLOSED TO OTHERS WITHOUT WRITTEN AUTHORIZATION AND MAY NOT BE USED IN ANY WAY AGAINST OR DETRIMENTAL TO MOLE MASTER SERVICES CORPORATION.

REVISION HISTORY			
REV	DESCRIPTION	DATE	BY
A	RVSD BOM. CREATED SF3010-00 WELDMENT	10-19-15	EPP

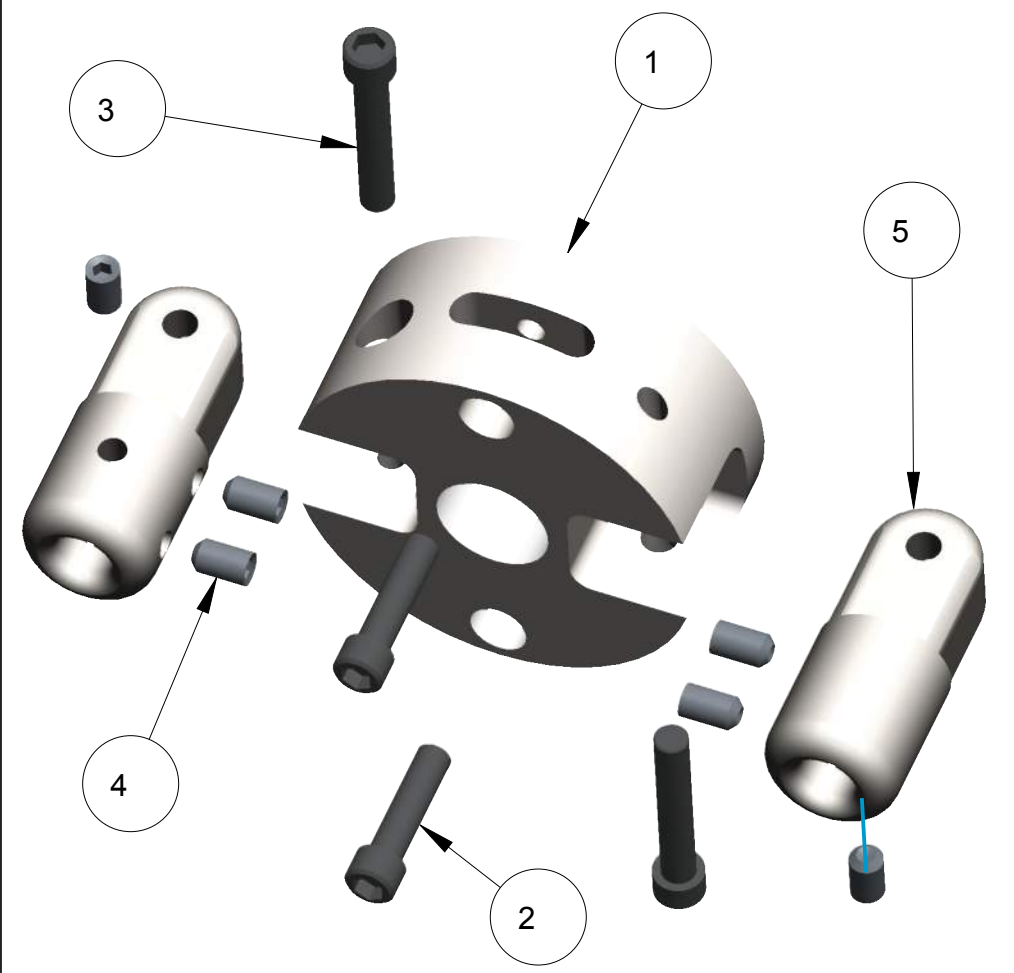


ITEM	QTY	PART NO.	DESCRIPTION
10	1	SF3010-00	UPPER SUPPORT FRAME WELDMENT
9	1	SF3003-00	MODIFIED WINCH HANDLE
8	1	SF3002-00	MODIFIED WINCH ASSEMBLY
7	1	090107	1/2-13 x 1-1/2", HAND KNOB
6	4	010158	1/2" X 2-1/2", DETENT RING PIN
5	4	010113	3/16", BLIND POP-RIVET, BUTTON HEAD, ALUM
4	1	010112	5/8-11, HEX PULL PIN
3	2	010111_1	1/16" X 6", BARE CABLE, STEEL LANYARD
2	2	010111	1/16" X 6", BARE CABLE, STEEL LANYARD
1	1	010101	3/8-16 X 2" X 3", U-BOLT, ZP

UNLESS OTHERWISE SPECIFIED DIMENSIONS ARE IN INCHES.		APPROVALS		DATE			27815 STATE ROUTE 7 MARIETTA, OHIO 45750 USA 740-374-6726	
TOLERANCES ARE: DECIMALS .01 ± 2" .XX ± .01 ± 2" .XXX ± .005 FRACTIONAL ± 1/16		EPP		12-14-12	TITLE		HYDRAULIC JUNIOR 360	
DO NOT SCALE DRAWING		-		-	MODEL NO:		JR360H	
TREATMENT		ENGR		-	UPPER SUPPORT FRAME ASSY		REV.	
FINISH		-		-	DWG NO.		A	
MATERIAL		SEE BOM		SCALE	3/8		SHEET 1 OF 1	

THIS MATERIAL IS THE PROPERTY OF MOLE MASTER SERVICES CORPORATION AND MAY NOT BE REPRODUCED, PUBLISHED, OR DISCLOSED TO OTHERS WITHOUT WRITTEN AUTHORIZATION AND MAY NOT BE USED IN ANY WAY AGAINST OR DETRIMENTAL TO MOLE MASTER SERVICES CORPORATION.

REVISION HISTORY			
REV	DESCRIPTION	DATE	BY
A	ADDED (2) 020207	02-25-14	EPP
B	ADDED (1) CH3007-00, REMOVED (1) 020204	02-19-15	EPP
C	ADDED MANIFOLD, CARTRIDGE, AND FITTINGS	03-04-16	EPP

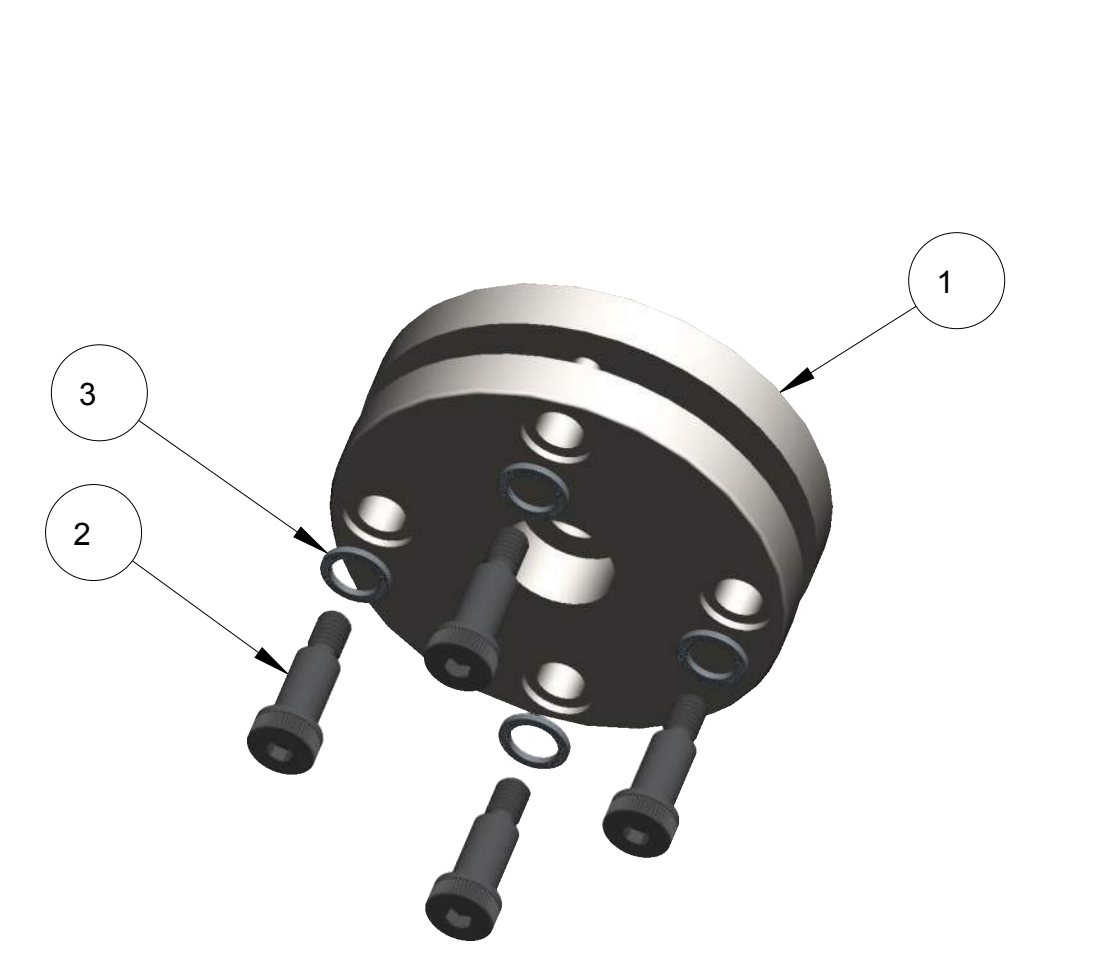


CH3007-00 (2 CHAIN & 2 WHIP CUTTER HEAD ASSEMBLY)

ITEM	QTY	PART NO.	DESCRIPTION
5	2	CH3007-02	WHIP CUTTER ATTACHMENT HOUSING
4	6	010100	3/8-16 X 5/8", SCKT. SET SCR, BRS
3	2	010122	3/8-16 X 2-1/4", SHCS, BLK. OXIDE
2	2	010121	3/8-16 X 1-1/2", SHCS, BLK. OXIDE
1	1	CH3007-01	2 CHAIN & 2 WHIP CUTTER HEAD

ITEM QTY PART NO. DESCRIPTION

BILL OF MATERIALS

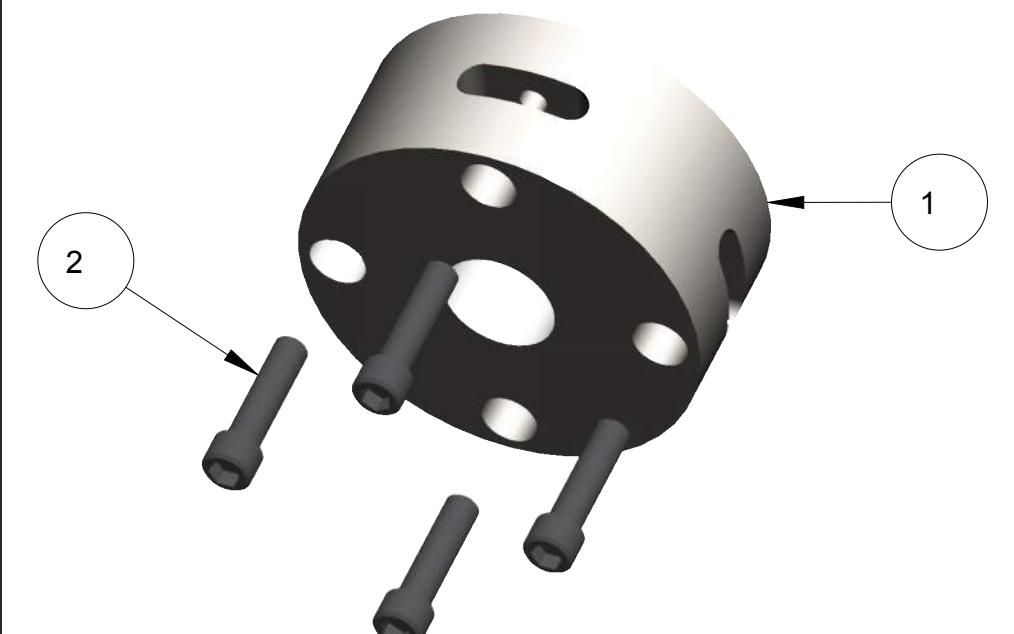


CH3008-00 (4 CHAIN STEEL CUTTER HEAD ASSEMBLY)

ITEM	QTY	PART NO.	DESCRIPTION
3	4	010106	1/2", NORD-LOCK WASHER, ZINC-FLAKE
2	4	010129	1/2 X 1", SCKT SHLDR. SCR, 3/8-16 THD
1	1	CH3008-01	4 CHAIN STEEL CUTTER HEAD

ITEM QTY PART NO. DESCRIPTION

BILL OF MATERIALS

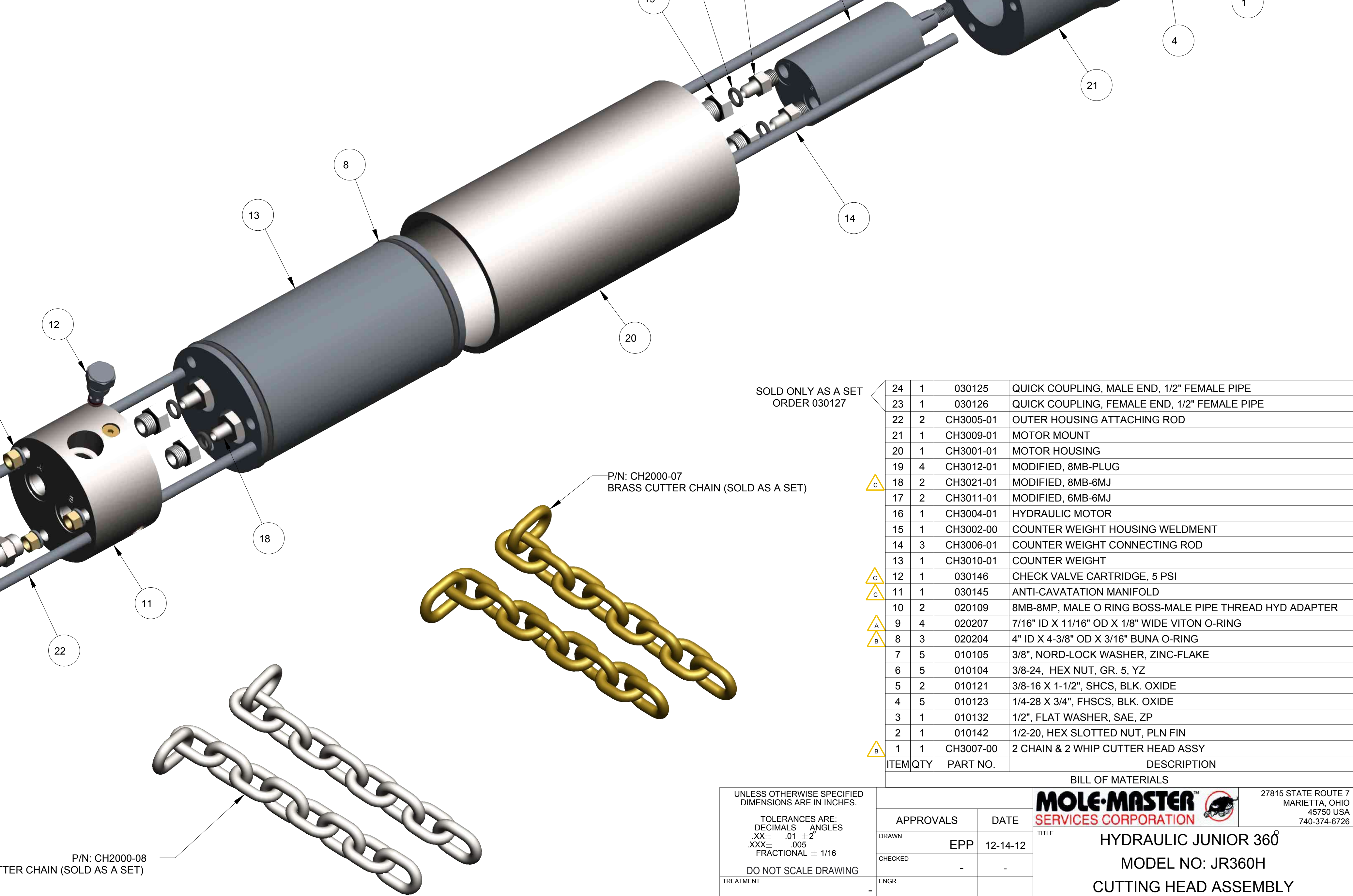
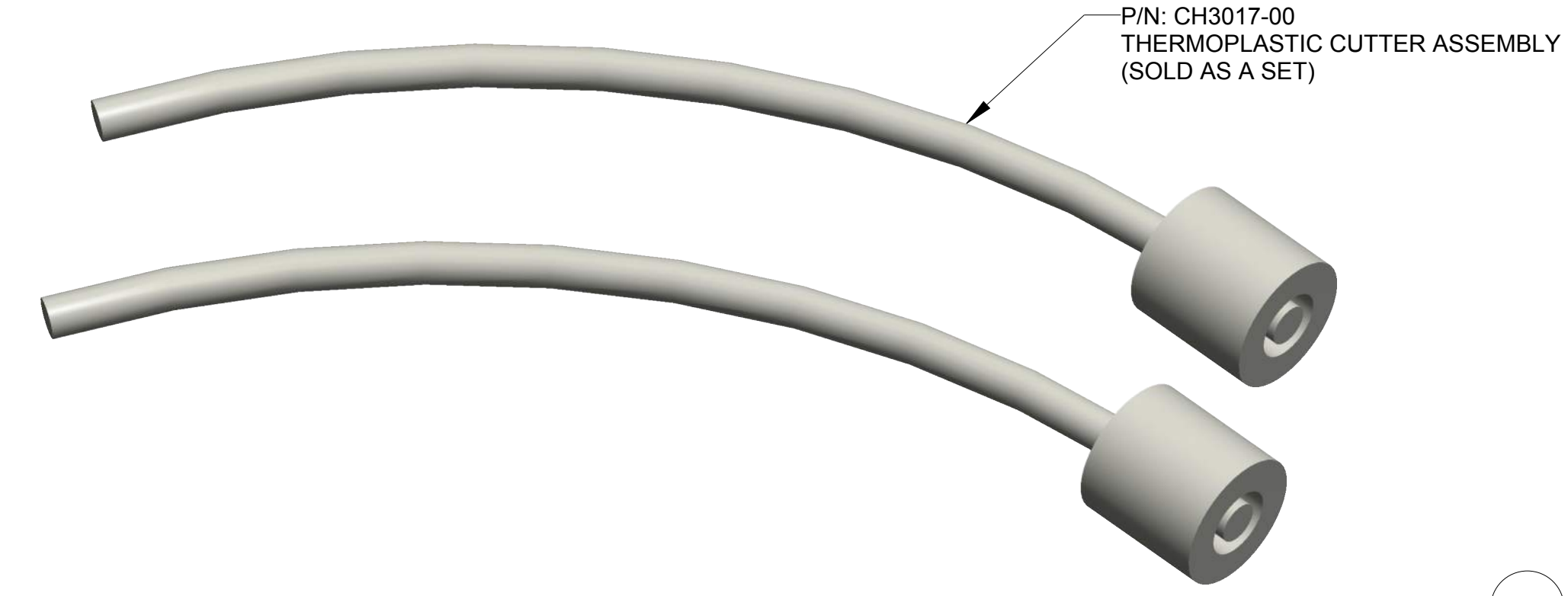
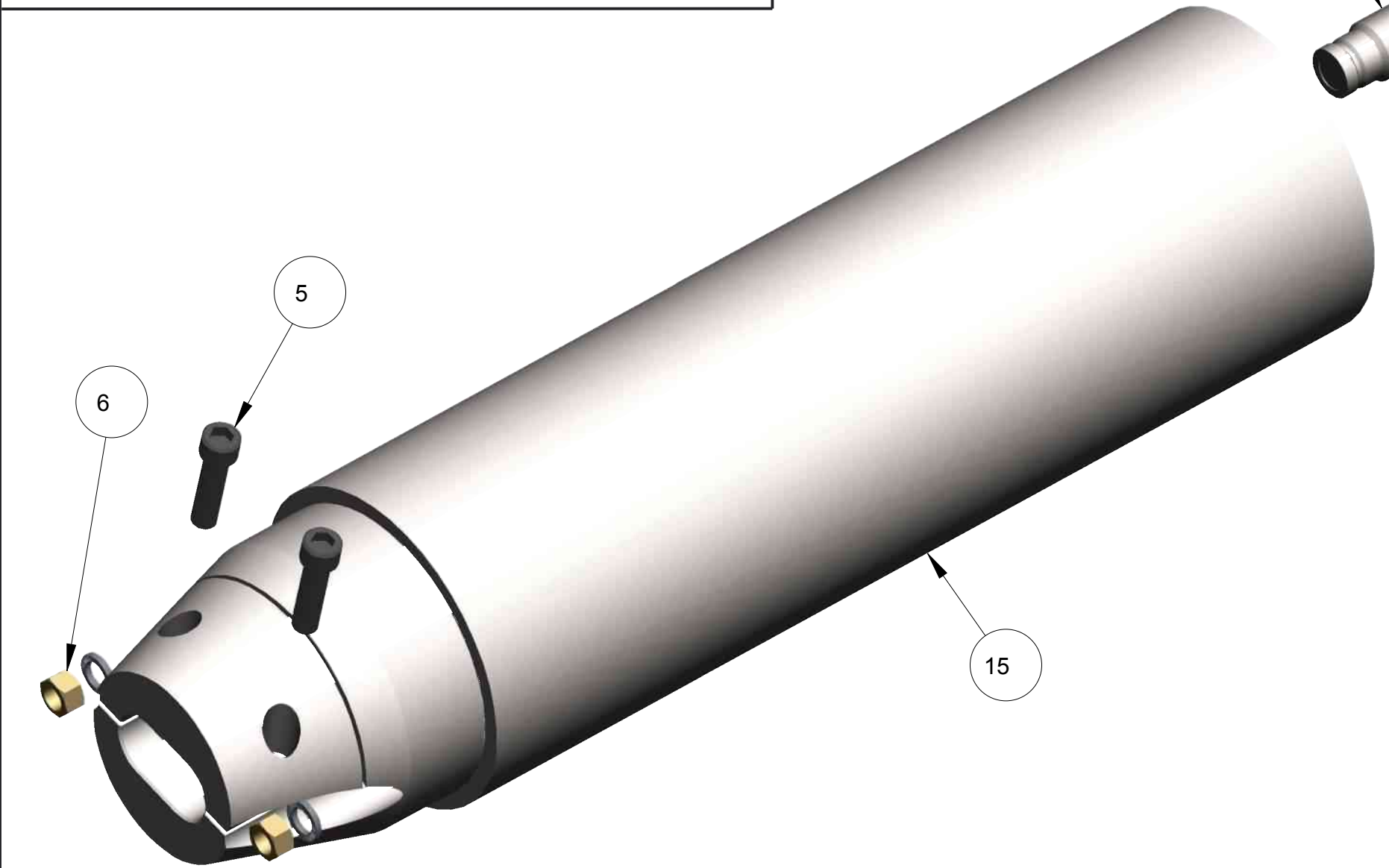


CH3003-00 (4 CHAIN CUTTER HEAD ASSEMBLY)

ITEM	QTY	PART NO.	DESCRIPTION
2	4	010121	3/8-16 X 1-1/2", SHCS, BLK. OXIDE
1	1	CH3003-01	4 CHAIN CUTTER HEAD

ITEM QTY PART NO. DESCRIPTION

BILL OF MATERIALS



SOLD ONLY AS A SET
ORDER 030127

ITEM	QTY	PART NO.	DESCRIPTION
24	1	030125	QUICK COUPLING, MALE END, 1/2" FEMALE PIPE
23	1	030126	QUICK COUPLING, FEMALE END, 1/2" FEMALE PIPE
22	2	CH3005-01	OUTER HOUSING ATTACHING ROD
21	1	CH3009-01	MOTOR MOUNT
20	1	CH3001-01	MOTOR HOUSING
19	4	CH3012-01	MODIFIED, 8MB-PLUG
18	2	CH3021-01	MODIFIED, 8MB-6MJ
17	2	CH3011-01	MODIFIED, 6MB-6MJ
16	1	CH3004-01	HYDRAULIC MOTOR
15	1	CH3002-00	COUNTER WEIGHT HOUSING WELDMENT
14	3	CH3006-01	COUNTER WEIGHT CONNECTING ROD
13	1	CH3010-01	COUNTER WEIGHT
12	1	030146	CHECK VALVE CARTRIDGE, 5 PSI
11	1	030145	ANTI-CAVATATION MANIFOLD
10	2	020109	8MB-8MP, MALE O RING BOSS-MALE PIPE THREAD HYD ADAPTER
9	4	020207	7/16" ID X 11/16" OD X 1/8" WIDE VITON O-RING
8	3	020204	4" ID X 4-3/8" OD X 3/16" BUNA O-RING
7	5	010105	3/8", NORD-LOCK WASHER, ZINC-FLAKE
6	5	010104	3/8-24, HEX NUT, GR. 5, YZ
5	2	010121	3/8-16 X 1-1/2", SHCS, BLK. OXIDE
4	5	010123	1/4-28 X 3/4", FHSCS, BLK. OXIDE
3	1	010132	1/2", FLAT WASHER, SAE, ZP
2	1	010142	1/2-20, HEX SLOTTED NUT, PLN FIN
1	1	CH3007-00	2 CHAIN & 2 WHIP CUTTER HEAD ASSY

ITEM QTY PART NO. DESCRIPTION

UNLESS OTHERWISE SPECIFIED
DIMENSIONS ARE IN INCHES.

TOLERANCES ARE:
DECIMALS ANGLES
.XX± .01 ±2°
.XXX± .005
FRACTIONAL ± 1/16

DO NOT SCALE DRAWING

TREATMENT -

FINISH -

MATERIAL - SEE BOM

APPROVALS	DATE
EPP	12-14-12

DRAWN - EPP

CHECKED -

ENGR -

27815 STATE ROUTE 7
MARIETTA, OHIO
45750 USA
740-374-6726

MOLE-MASTER
SERVICES CORPORATION

TITLE: HYDRAULIC JUNIOR 360
MODEL NO: JR360H
CUTTING HEAD ASSEMBLY

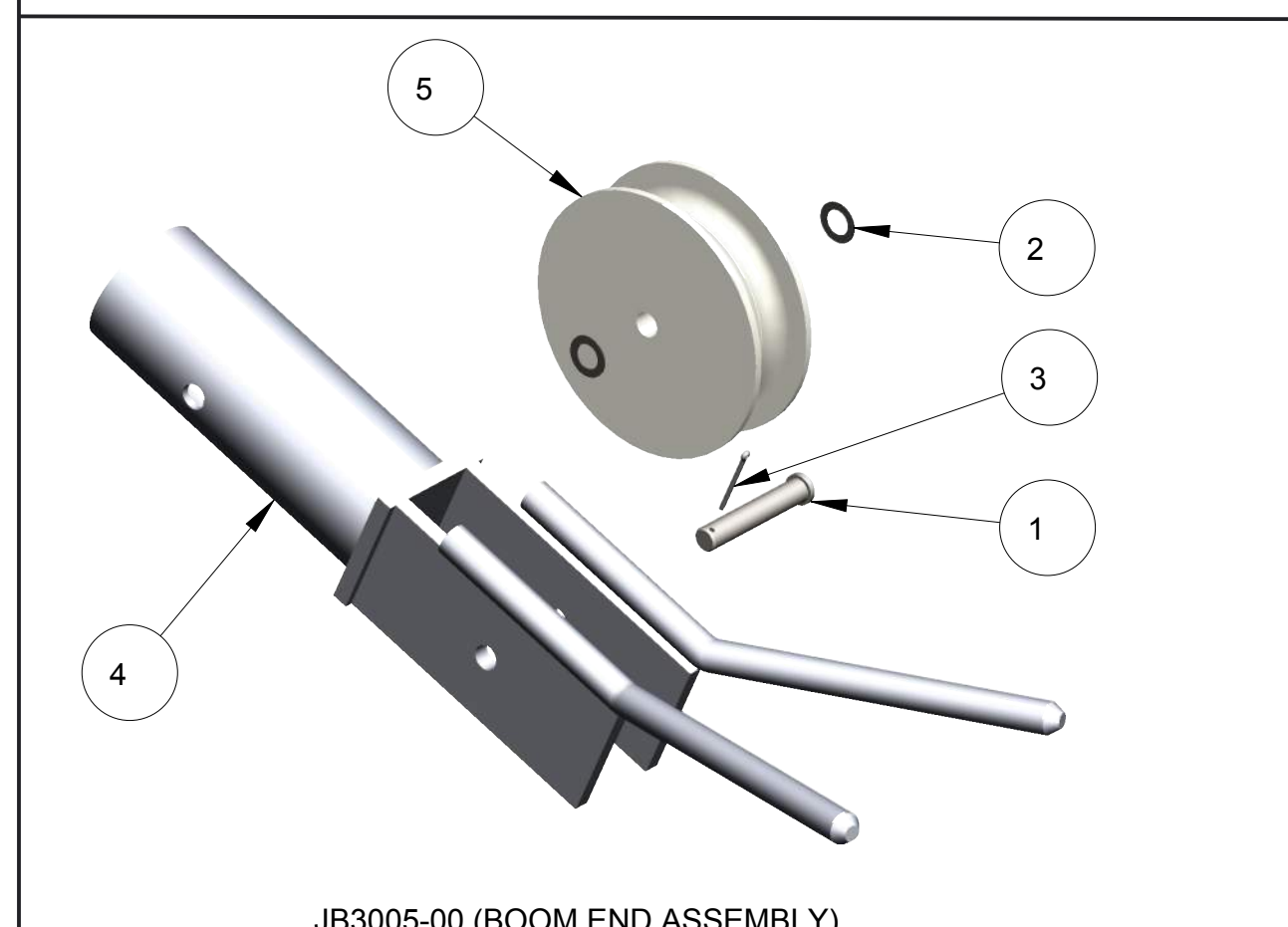
SIZE: D DWG NO. PL3360H-7 REV. C

SCALE: 1/2

CARC WT ACT WT SHEET 1 OF 1

THIS MATERIAL IS THE PROPERTY OF MOLE MASTER SERVICES CORPORATION AND MAY NOT BE REPRODUCED, PUBLISHED, OR DISCLOSED TO OTHERS WITHOUT WRITTEN AUTHORIZATION AND MAY NOT BE USED IN ANY WAY AGAINST OR DETRIMENTAL TO MOLE MASTER SERVICES CORPORATION.

REVISION HISTORY			
REV	DESCRIPTION	DATE	BY
A	RVSD JB3005-00 BOM	02-15-16	EPP



JB3005-00 (BOOM END ASSEMBLY)

ITEM	QTY	PART NO.	DESCRIPTION
14	1	JB3008-00	EYE BOLT CLEVIS PIN
13	1	JB3006-01	BOOM EXTENSION
12	1	JB3004-01	BOOM EXTENSION
11	1	JB3003-01	BOOM EXTENSION
10	1	JB3002-00	BOOM EXTENSION
9	1	JB3005-00	BOOM END ASSEMBLY
8	1	JB3001-00	BOOM
7	1	010148	3/8" CHAIN, DOUBLE CLEVIS LINK, ZP
6	1	030105	3/4" x 6-1/2" VINYL COATED HITCH PIN
5	3	010103	3/4" X 4-1/2", CLEVIS PIN, ZP
4	5	010159	3/4" SHAFT, RUE RING LOCKING COTTER PIN
3	1	JB3009-00	1/4" GALV AIRCRAFT CABLE ASSEMBLY 138-3/4" LG
2	1	JB3007-00	1/4" GALV AIRCRAFT CABLE ASSEMBLY 50-1/4" LG
1	1	030124	1/2" ROUND PIN CHAIN SHACKLE

ITEM	QTY	PART NO.	DESCRIPTION
5	1	M3000-05	PULLEY, DOUBLE SPOOL
4	1	JB3015-00	BOOM END WELDMENT
3	1	010153	5/32" x 2", COTTER PIN, ZP
2	2	010135	3/4", MACHINERY BUSHING, 18 GA., PLN FIN
1	1	010102	3/4" X 4", CLEVIS PIN, ZP

BILL OF MATERIALS

UNLESS OTHERWISE SPECIFIED DIMENSIONS ARE IN INCHES.

TOLERANCES ARE:
 DECIMALS ANGLES
 .XX± .01 ±2°
 .XXX± .005
 FRACTIONAL ± 1/16

DO NOT SCALE DRAWING

APPROVALS	DATE
DRAWN	EPP 03-12-13
CHECKED	-
ENGR	-

FINISH -

MATERIAL SEE BOM

SCALE 3/16

27815 STATE ROUTE 7
 MARIETTA, OHIO
 45750 USA
 740-374-6726

MOLE-MASTER SERVICES CORPORATION

TITLE
 HYDRAULIC JUNIOR 360
 MODEL NO: JR360H
 BOOM ASSEMBLY

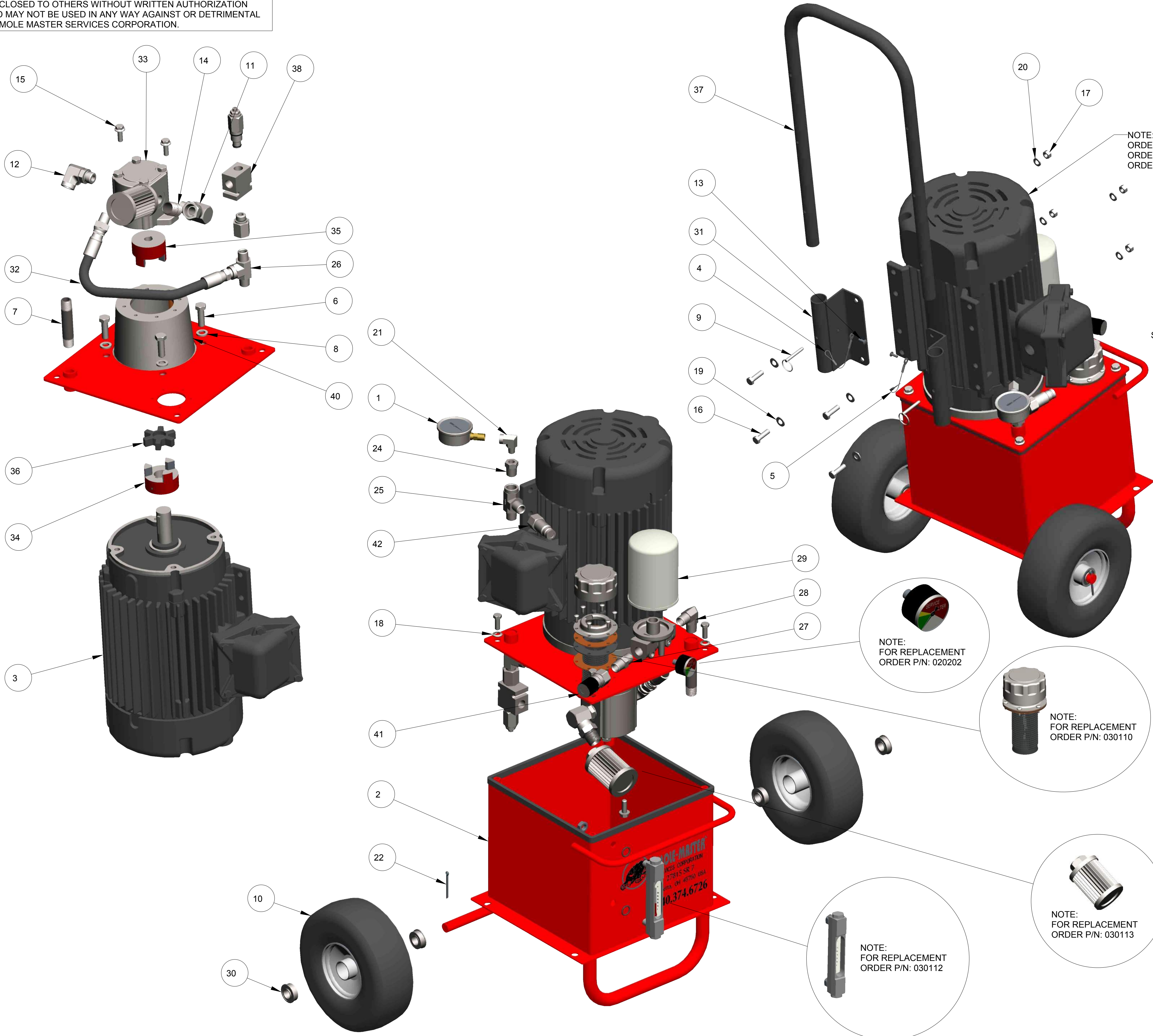
DWG NO. PL3360H-8

REV. A

SHEET 1 OF 1

THIS MATERIAL IS THE PROPERTY OF MOLE MASTER SERVICES CORPORATION AND MAY NOT BE REPRODUCED, PUBLISHED, OR DISCLOSED TO OTHERS WITHOUT WRITTEN AUTHORIZATION AND MAY NOT BE USED IN ANY WAY AGAINST OR DETRIMENTAL TO MOLE MASTER SERVICES CORPORATION.

REVISION HISTORY			
REV	DESCRIPTION	DATE	BY
A	040102 WAS 010117	05-15-14	EPP
B	050102 WAS 020101, 050105 WAS 020103	05-30-14	EPP



NOTE:
 ORDER P/N: 030115 FOR EXPLOSION PROOF AC MOTOR
 ORDER P/N: 030139 FOR 200 & 575 VOLT ELECTRIC AC MOTOR
 ORDER P/N: 030140 FOR 380 VOLT EXPLOSION PROOF MOTOR

SOLD ONLY AS A SET
 ORDER 030127

ITEM	QTY	PART NO.	DESCRIPTION
42	1	030125	QUICK COUPLING, MALE END, 1/2" FEMALE PIPE
41	1	030126	QUICK COUPLING, FEMALE END, 1/2" FEMALE PIPE
40	1	030111	PUMP MOUNT FOR ELECTRIC MOTOR
39	1	030128	PRESSURE RELIEF CARTRIDGE
38	1	030129	PRESSURE RELIEF BODY
37	1	PU3001-01	POWER UNIT HANDLE
36	1	030119	LOVEJOY-SPIDER COUPLING-L099/L100SOX
35	1	030120	LOVEJOY COUPLER-L099X5/8HUB3/16
34	1	030121	LOVEJOY COUPLER-L099X1 1/8HUB1/4
33	1	030130	HYDRAULIC GEAR PUMP
32	1	HH3004-00	HOSE ASSY,#8M3K,(1)8GE-8MPX,(1)8GE-8MP, 18" LGTH
31	2	PU3002-00	HANDLE MOUNTING BRACKET
30	4	030104	FLANGED WHEEL BEARING, HEAVY DUTY
29	1	030122	FILTER ASSEMBLY, HYDRAULIC OIL
28	1	050105	8MP-8MP90, MALE PIPE-MALE PIPE 90 D ELBOW HYD ADAPTER
27	1	050102	8MP-8MP, MALE PIPE-MALE PIPE HEX NIPPLE
26	1	020105	8MP-8MP-8FP, MALE PIPE-MALE PIPE-FEMALE PIPE TEE HYD ADAPTER
25	1	020106	8MP-8FP-8MP, MALE PIPE-FEMALE PIPE-MALE PIPE TEE HYD ADAPTER
24	1	020102	8MP-4FP, MALE PIPE-FEMALE PIPE HEX REDUCER BUSHING HYD ADAPTER
23	1	020110	8MB-8FP, MALE O RING BOSS-FEMALE PIPE THREAD STR HYD ADAPT
22	2	010153	5/32" x 2", COTTER PIN, ZP
21	1	020104	4MP-4FP90, MALE PIPE-FEMALE 90° STREET ELBOW HYD ADAPTER
20	4	010137	3/8", SPLIT LOCK WASHER, ZP
19	4	010131	3/8", FLAT WASHER, SAE, ZP
18	4	010133	3/8", BONDED SEALING WASHER, 18-8 SS
17	4	010139	3/8-16, HEX NUT, GR. A, ZP
16	4	010118	3/8-16 X 1-1/4", HHCS, GR. 5, ZP
15	2	040102	3/8-16 X 1", FLG BOLT, SERRATED WASHER, GR 8.2, ZP
14	1	010154	3/4" CLOSE PIPE NIPPLE, SCHD 40, STL
13	2	010113	3/16", BLIND POP-RIVET, BUTTON HEAD, ALUM
12	1	020116	10MB-8FP90, MALE O RING BOSS-FEMALE PIPE 90° ELBOW HYD ADAPTER
11	1	020118	10MB-12FPX90, MALE O RING BOSS-FEMALE PIPE SWIVEL 90° ELBOW HYD ADPT
10	2	030103	10" X 3" OFFSET INTEGRAL HUB TIRE
9	2	010157	1/4" X 1-1/2", DETENT RING PIN
8	4	010138	1/2", SPLIT LOCK WASHER, ZP
7	1	010149	1/2" X 4", SEAMLESS PIPE NIPPLE, SCHD 80, 3000#
6	4	010120	1/2-13 X 1-1/2", HHCS, GR. 5, ZP
5	1	010111_3	1/16" X 6", BARE CABLE, STEEL LANYARD
4	1	010111_2	1/16" X 6", BARE CABLE, STEEL LANYARD
3	1	030138	5 HP, 1750 RPM, 3PH, TEFC GENERAL PURPOSE ELECTRIC AC MOTOR
2	1	030114	5 GALLON VERTICAL HYDRAULIC RESERVOIR
1	1	020203	2-1/2"-3000 PSI GLY GAUGE, 1/4" NPT BOTTOM MOUNT

NOTE:
 FOR REPLACEMENT
 ORDER P/N: 020202

NOTE:
 FOR REPLACEMENT
 ORDER P/N: 030110

NOTE:
 FOR REPLACEMENT
 ORDER P/N: 030113

NOTE:
 FOR REPLACEMENT
 ORDER P/N: 030112

UNLESS OTHERWISE SPECIFIED DIMENSIONS ARE IN INCHES.

TOLERANCES ARE:
 DECIMALS .01 ± .002
 .XX± .005
 FRACTIONAL ± 1/16

DO NOT SCALE DRAWING

TREATMENT - ENGR

FINISH -

MATERIAL - SEE BOM

APPROVALS	DATE
EPP	12-14-12
CHECKED	-

SCALE 1/4"

DRWG NO. PL3360H-9

REV. B

SHEET 1 OF 1

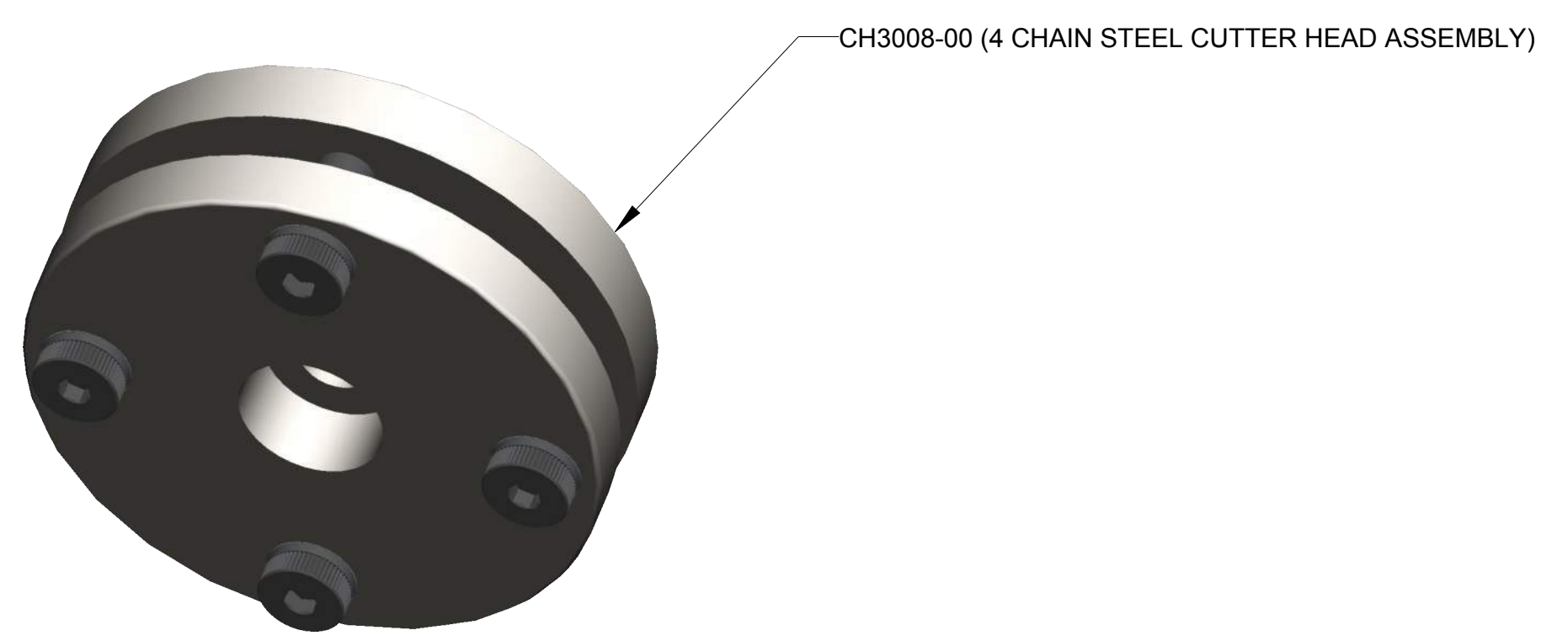
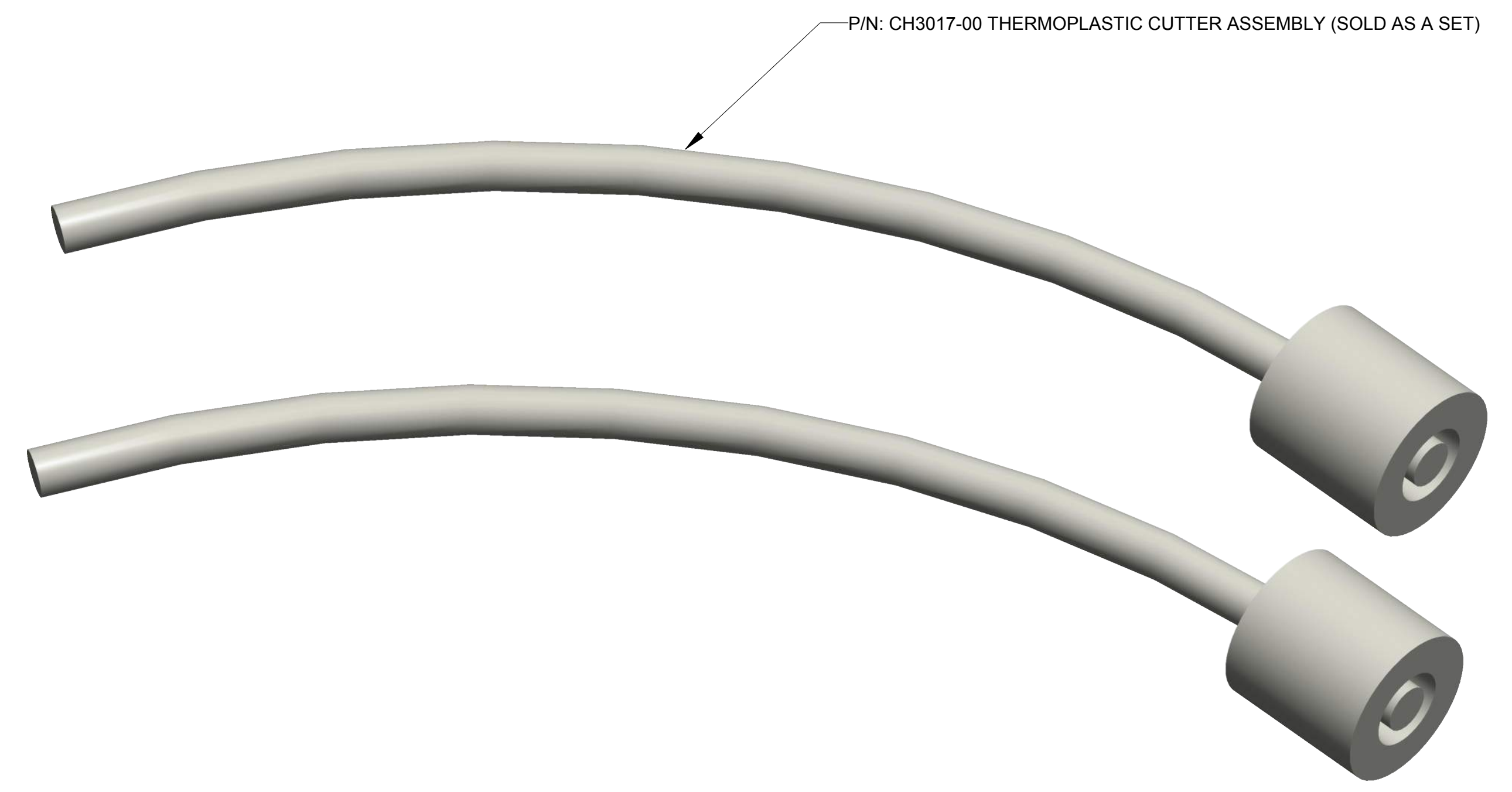
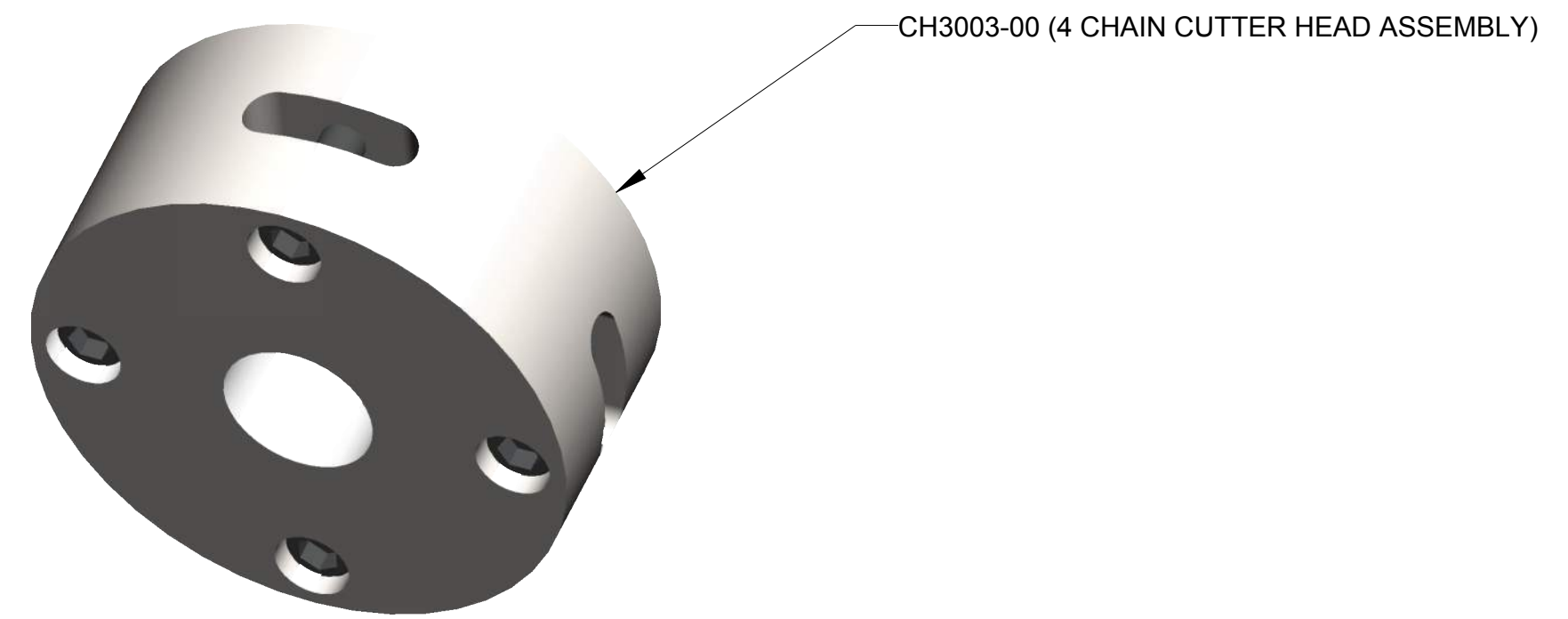
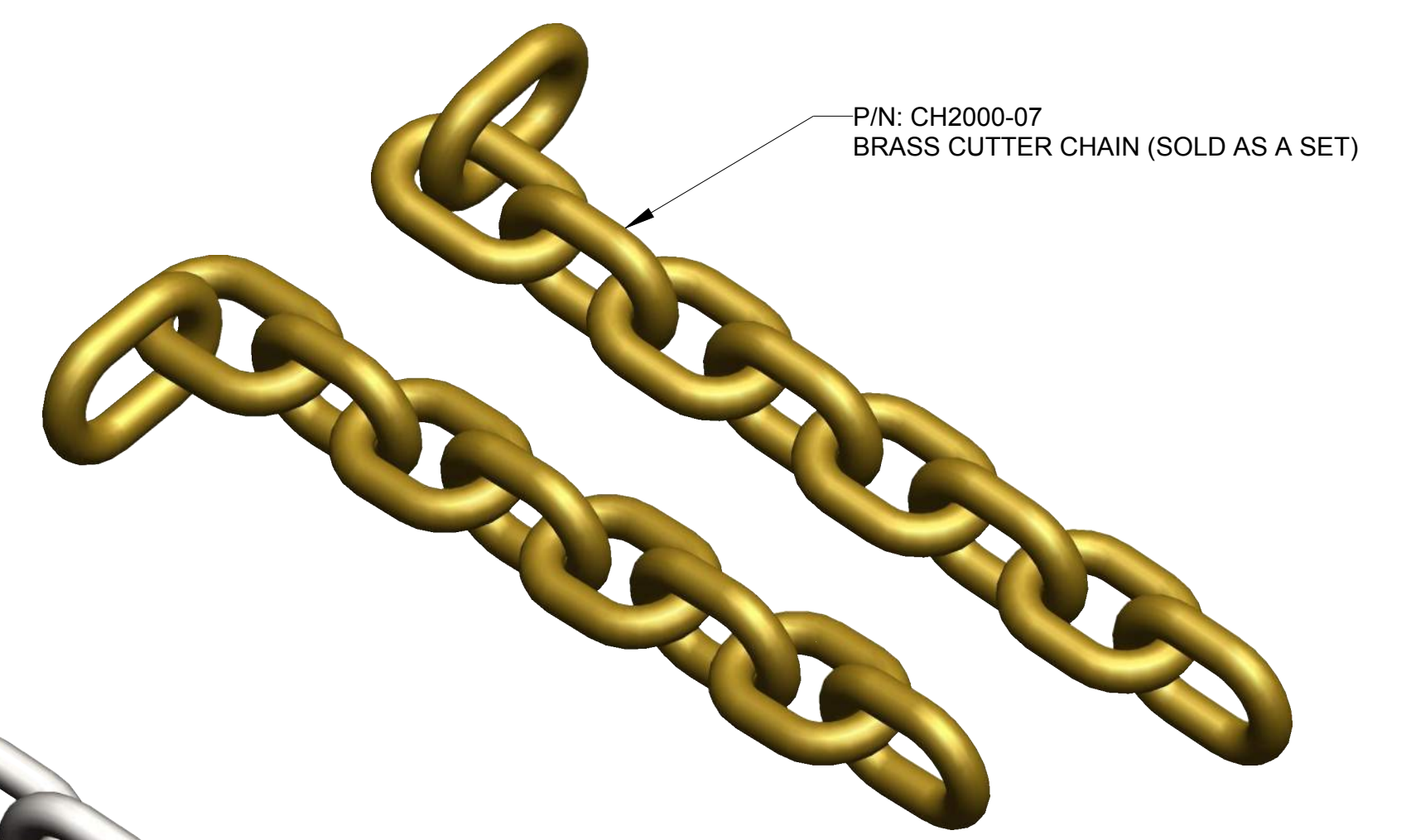
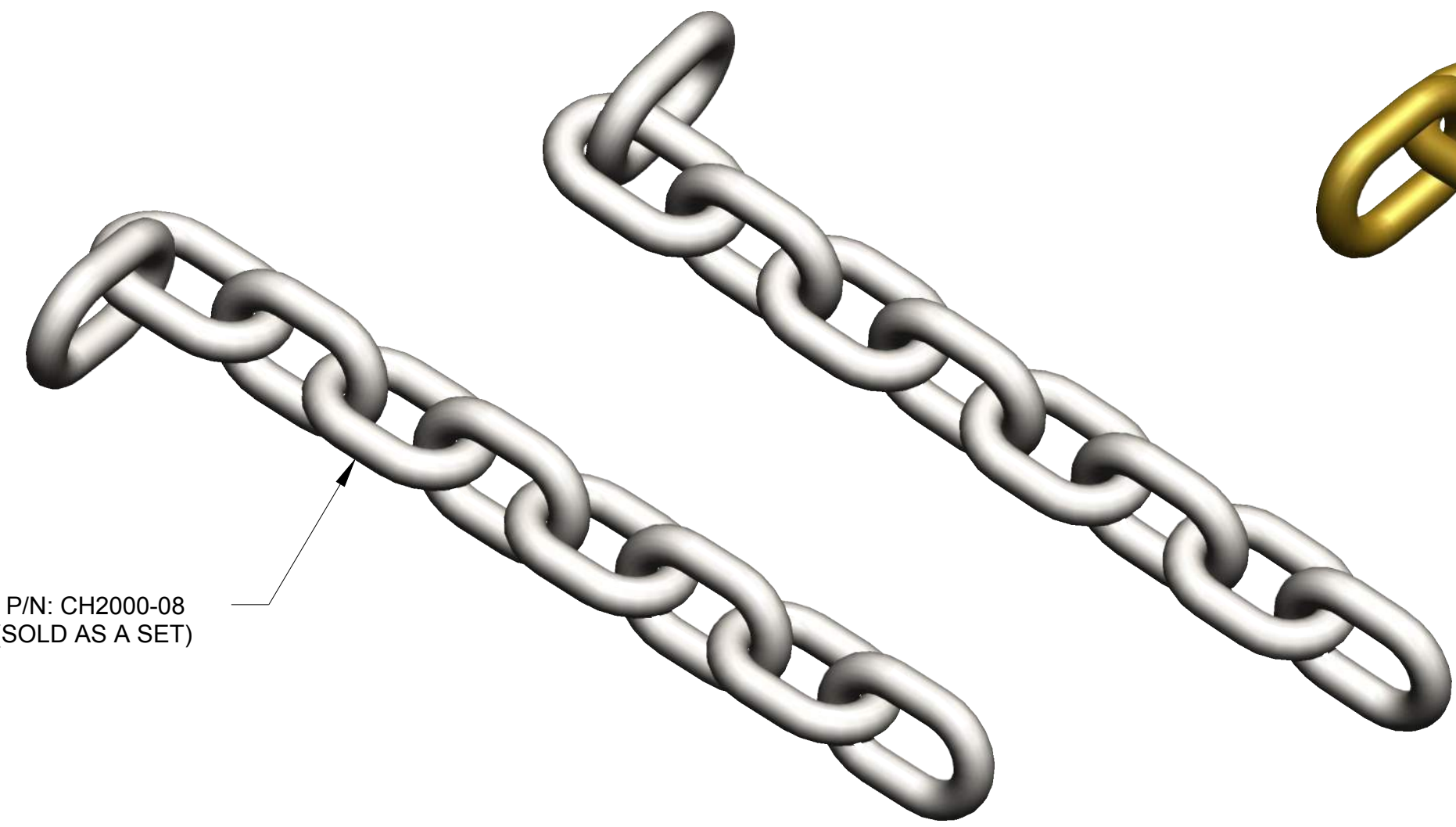
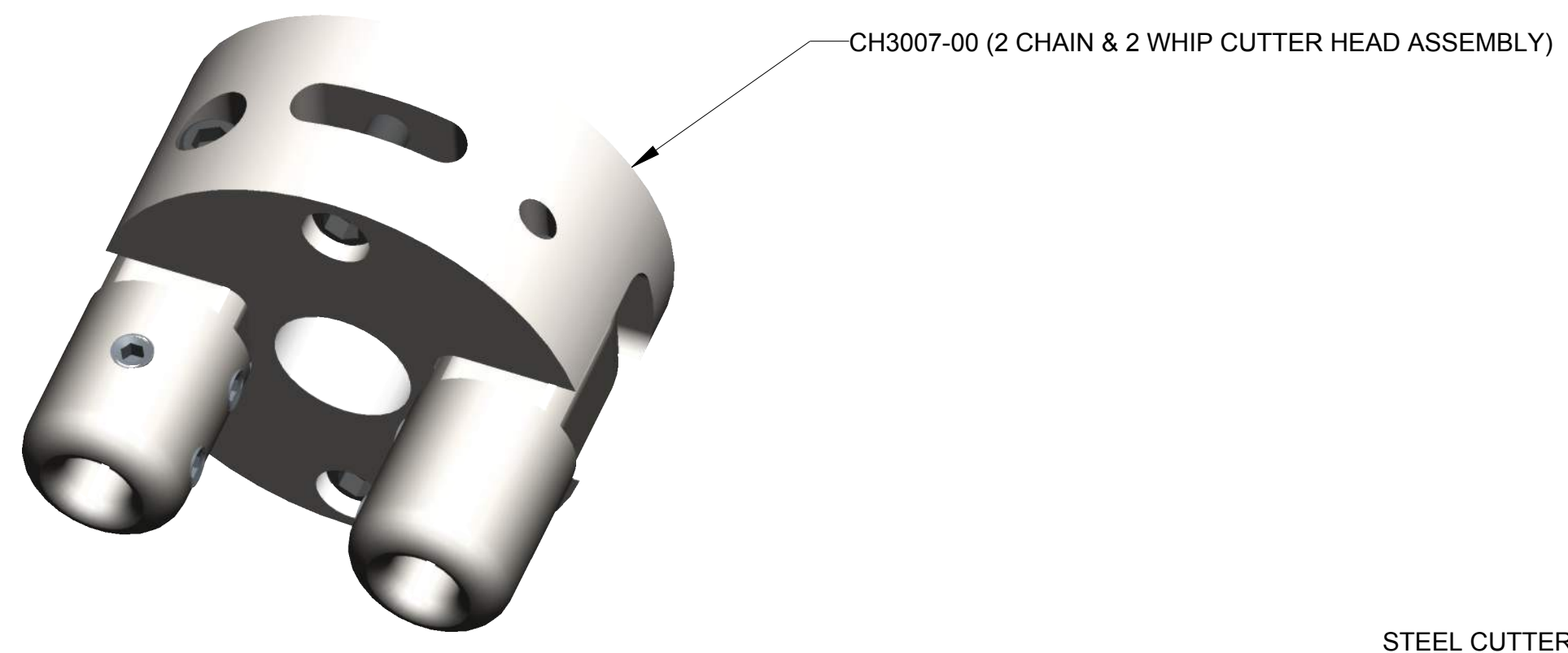
MOLE-MASTER SERVICES CORPORATION

27815 STATE ROUTE 7
 MARIETTA, OHIO
 45750 USA
 740-374-6726

TITLE
**HYDRAULIC JUNIOR 360
 MODEL NO: JR360H
 POWER UNIT ASSEMBLY**

THIS MATERIAL IS THE PROPERTY OF MOLE MASTER SERVICES CORPORATION AND MAY NOT BE REPRODUCED, PUBLISHED, OR DISCLOSED TO OTHERS WITHOUT WRITTEN AUTHORIZATION AND MAY NOT BE USED IN ANY WAY AGAINST OR DETRIMENTAL TO MOLE MASTER SERVICES CORPORATION.

REVISION HISTORY			
REV	DESCRIPTION	DATE	BY



UNLESS OTHERWISE SPECIFIED DIMENSIONS ARE IN INCHES.		APPROVALS		DATE		27815 STATE ROUTE 7 MARIETTA, OHIO 45750 USA 740-374-6728	
TOLERANCES ARE: DECIMALS ANGLES .XX± .01 ±2° .XXX± .005 FRACTIONAL ± 1/16		DRAWN	EPP	3-14-13		TITLE	HYDRAULIC JUNIOR 360 MODEL NO: JR360H ASSESSORIES
DO NOT SCALE DRAWING		CHECKED	-	-	SIZE	DWG NO.	REV.
TREATMENT	-	ENGR			D	PL3360H-10	-
FINISH	-				SCALE	1/2	1 OF 1
MATERIAL	SEE BOM						